

# Med25 Rabbit pAb

货号: **AYP23454**

## 产品信息

反应	Arabidopsis thaliana
宿主	Rabbit
克隆性	Polyclonal
预测反应	
应用	WB
推荐浓度	<b>WB:</b> 1:500 - 1:1000
理论分子量	89kDa
实测分子量	75KDa
形式	Liquid
保存条件	Store at -20°C. Avoid freeze / thaw cycles. Buffer: PBS with 0.05% proclin300,50% glycerol,pH7.3.
偶联物	Unconjugated
阳性对照	Seedling,Inflorescences,Before inflorescence,Rosette leaf
细胞定位	nucleus
纯化	Affinity purification

## 抗原信息

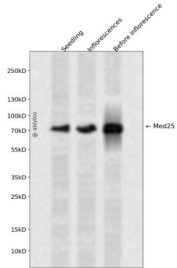
抗原信息	A synthetic peptide corresponding to a sequence within amino acids 200-300 of arabidopsis thaliana Med 25 (NP_173925.3).
序列	AGKPNQQSADLSIDTAKNTFYLVLISENFVEACAALSHSATNLPQTQSPVKVDRA TVAPSIPVTGQPPAPVSSANGPIQNR QPVS VGPVPTATVKVEPSTV

## 靶点信息

研究背景	Encodes a nuclear protein that acts in a phyB pathway (but downstream of phyB) and induces flowering in response to suboptimal light conditions. PFT1 promotes flowering in CO dependent and independent pathways and integrates several environmental stimuli, such as light quality and JA-dependent defenses. Mutants are hypo-responsive to far-red and hyper-responsive to red light and flower late under long day conditions. Also shown to be a Mediator subunit regulating jasmonate-dependent defense.
基因ID	839141

基因名	
Swiss	Q7XY2
别名	F2J7.4; F2J7_4; MED25; mediator 25; PHYTOCHROME AND FLOWERING TIME 1

## 产品验证



Western blot analysis of Med25 expressed in Seedling, Inflorescences, Before inflorescence using Med25 Rabbit pAb at 1:1000. Secondary antibody: HRP Goat Anti-Rabbit IgG (H+L) at 1:5000. Lysates/proteins: 30ug per lane. Blocking buffer: 5% non-fat dry milk in TBST. Detection: ECL Enhanced Kit. Exposure time : 120s.

## 实验步骤

访问官网浏览详情: [www.ablybio.cn](http://www.ablybio.cn)