

FT Rabbit pAb

货号: **AYP23453**

产品信息

| | |
|-------|--|
| 反应 | Arabidopsis thaliana |
| 宿主 | Rabbit |
| 克隆性 | Polyclonal |
| 预测反应 | |
| 应用 | WB |
| 推荐浓度 | WB: 1:500 - 1:1000 |
| 理论分子量 | 19kDa |
| 实测分子量 | 20KDa |
| 形式 | Liquid |
| 保存条件 | Store at -20°C. Avoid freeze / thaw cycles. Buffer: PBS with 0.05% proclin300,50% glycerol,pH7.3. |
| 偶联物 | Unconjugated |
| 阳性对照 | Seedling,Before inflorescence |
| 细胞定位 | cytoplasm,endoplasmic reticulum,nucleus |
| 纯化 | Affinity purification |

抗原信息

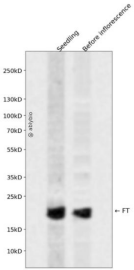
| | |
|------|---|
| 抗原信息 | A synthetic peptide corresponding to a sequence within amino acids 70-150 of arabidopsis thaliana FT (NP_176726.1). |
| 序列 | VDPDVPSPSPNPHLREYLHWLVTDIPATTGTTFGNEIVCYENPSPTAGIHRVVFILFRQLGRQTVYAPGWRQNFNTREFAEI |

靶点信息

| | |
|------|---|
| 研究背景 | FT, together with LFY, promotes flowering and is antagonistic with its homologous gene, TERMINAL FLOWER1 (TFL1). FT is expressed in leaves and is induced by long day treatment. Either the FT mRNA or protein is translocated to the shoot apex where it induces its own expression. Recent data suggests that FT protein acts as a long-range signal. FT is a target of CO and acts upstream of SOC1. |
| 基因ID | 842859 |

| | |
|-------|---|
| 基因名 | |
| Swiss | Q9SXZ2 |
| 别名 | F5I14.3; F5I14_3; FLOWERING LOCUS T; REDUCED STEM BRANCHING 8; RSB8 |

产品验证



Western blot analysis of FT expressed in Seedling, Before inflorescence using FT Rabbit pAb at 1:1000. Secondary antibody: HRP Goat Anti-Rabbit IgG (H+L) at 1:5000. Lysates/proteins: 30ug per lane. Blocking buffer: 5% non-fat dry milk in TBST. Detection: ECL Enhanced Kit. Exposure time: 120s.

实验步骤

访问官网浏览详情: www.ablybio.cn