

SnRK2.3 Rabbit pAb

货号: **AYP23449**

产品信息

反应	Arabidopsis thaliana
宿主	Rabbit
克隆性	Polyclonal
预测反应	
应用	WB
推荐浓度	WB: 1:500 - 1:1000
理论分子量	41kDa
实测分子量	41KDa
形式	Liquid
保存条件	Store at -20°C. Avoid freeze / thaw cycles. Buffer: PBS with 0.05% proclin300,50% glycerol,pH7.3.
偶联物	Unconjugated
阳性对照	Inflorescence
细胞定位	cytoplasm,nucleus,plastid
纯化	Affinity purification

抗原信息

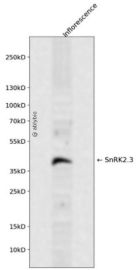
抗原信息	A synthetic peptide corresponding to a sequence within amino acids 200-300 of arabidopsis thaliana SnR K2.3 (NP_201489.1).
序列	DVWSCGVTLVYMLVGAYPFEDPEEPRDYRKTQRILSVKYSIPDDIRISPECCHLISRIFVADPATRISIPEIKTHSWFLKNLPA DLMNESNTGSQFQEPE

靶点信息

研究背景	encodes a member of SNF1-related protein kinases (SnRK2) whose activity is activated by ionic (salt) and non-ionic (mannitol) osmotic stress. Enzyme involved in the ABA signaling during seed germination, dormancy and seedling growth.
基因ID	836822

基因名	
Swiss	Q39193
别名	SNRK2-3; SRK2I; SUCROSE NONFERMENTING 1 (SNF1)-RELATED PROTEIN KINASE 2-3; sucrose nonfermenting 1(SNF1)-related protein kinase 2.3

产品验证



Western blot analysis of SnRK2.3 expressed in Inflorescence using SnRK2.3 Rabbit pAb at 1:1000. Secondary antibody: HRP Goat Anti-Rabbit IgG (H+L) at 1:5000. Lysates/proteins: 30ug per lane. Blocking buffer: 5% non-fat dry milk in TBST. Detection: ECL Enhanced Kit. Exposure time: 120s.

实验步骤

访问官网浏览详情: www.ablybio.cn