

DET1 Rabbit pAb

货号: **AYP23448**

产品信息

反应	Arabidopsis thaliana
宿主	Rabbit
克隆性	Polyclonal
预测反应	
应用	WB
推荐浓度	WB: 1:500 - 1:1000
理论分子量	62kDa
实测分子量	62KDa
形式	Liquid
保存条件	Store at -20°C. Avoid freeze / thaw cycles. Buffer: PBS with 0.05% proclin300,50% glycerol,pH7.3.
偶联物	Unconjugated
阳性对照	Seedling,Inflorescences,Before inflorescence,Rosette leaf
细胞定位	nucleoplasm,nucleus
纯化	Affinity purification

抗原信息

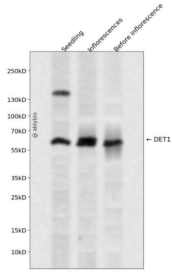
抗原信息	A synthetic peptide corresponding to a sequence within amino acids 350-450 of arabidopsis thaliana DET 1 (NP_192756.2).
序列	GGVTRSADHHPAFFAVYNMETTDIVAFYQNSAEDLYQLFEQFSDHFTVSSSTPFMNFVTSHSNNVYALEQLKYTKNKSNS FSQFVKKMLLSLPFSCQSQSP

靶点信息

研究背景	Encodes a nuclear-localized protein that acts as a repressor of photomorphogenesis and may be involved in chromatin remodeling.
基因ID	826609
基因名	

Swiss	P48732
别名	ATDET1; DE-ETIOLATED 1; FUS2; FUSCA 2; T9A4.17

产品验证



Western blot analysis of DET1 expressed in Seedling, Inflorescences, Before inflorescence using DET1 Rabbit pAb at 1:1000. Secondary antibody: HRP Goat Anti-Rabbit IgG (H+L) at 1:5000. Lysates/proteins: 30 µg per lane. Blocking buffer: 5% non-fat dry milk in TBST. Detection: ECL Enhanced Kit. Exposure time: 120s.

实验步骤

访问官网浏览详情: www.ablybio.cn