

# ABCA6 Rabbit pAb

货号: AYP23430

## 产品信息

反应	Human,Mouse,Rat
宿主	Rabbit
克隆性	Polyclonal
预测反应	
应用	WB
推荐浓度	<b>WB:</b> 1:500 - 1:1000
理论分子量	44kDa/183kDa
实测分子量	180KDa
形式	Liquid
保存条件	Store at -20°C. Avoid freeze / thaw cycles. Buffer: PBS with 0.05% proclin300,50% glycerol,pH7.3.
偶联物	Unconjugated
阳性对照	293T,RAW264.7,Mouse liver,Rat liver
细胞定位	Membrane,Multi-pass membrane protein
纯化	Affinity purification

## 抗原信息

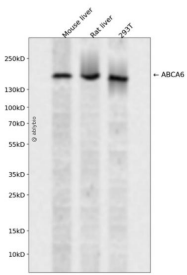
抗原信息	A synthetic peptide corresponding to a sequence within amino acids 1518-1617 of human ABCA6 (NP_525023.2).
序列	SQVTLVHTEILKLFPPQAAGQERYSSLTYKLPVADVYPLSQTFHKLEAVKHNFNLEEYSLSQCTLEKVFLELSKEQEVGNFDE EIDTTMRWKLLPHSDEP

## 靶点信息

研究背景	The membrane-associated protein encoded by this gene is a member of the superfamily of ATP-binding cassette (ABC) transporters. ABC proteins transport various molecules across extra- and intracellular membranes. ABC genes are divided into seven distinct subfamilies (ABC1, MDR/TAP, MRP, ALD, OABP, GCN20, and White). This encoded protein is a member of the ABC1 subfamily. Members of the ABC1 subfamily comprise the only major ABC subfamily found exclusively in multicellular eukaryotes. This gene is clustered among 4 other ABC1 family members on 17q24 and may play a role in macrophage lipid homeostasis.
------	--

基因ID	23460
基因名	ABCA6
Swiss	Q8N139
别名	ABCA6;EST155051;Abca6

## 产品验证



Western blot analysis of ABCA6 expressed in Mouse liver, Rat liver, 293T using ABCA6 Rabbit pAb at 1:1000. Secondary antibody: HRP Goat Anti-Rabbit IgG (H+L) at 1:5000. Lysates/proteins: 30ug per lane. Blocking buffer: 5% non-fat dry milk in TBST. Detection: ECL Enhanced Kit. Exposure time: 120s.

## 实验步骤

访问官网浏览详情: [www.ablybio.cn](http://www.ablybio.cn)