

Phospho-POLR2A CTD-T4 Rabbit pAb

货号: AYP23342

产品信息

反应	Human,Mouse,Rat
宿主	Rabbit
克隆性	Polyclonal
预测反应	
应用	WB IP ChIP
推荐浓度	WB: 1:500 - 1:1000 IP: 1:500 - 1:1000 ChIP: 1:50 - 1:200
理论分子量	63kDa/217kDa
实测分子量	250KDa
形式	Liquid
保存条件	Store at -20°C. Avoid freeze / thaw cycles. Buffer: PBS with 0.05% proclin300,50% glycerol,pH7.3.
偶联物	Unconjugated
阳性对照	MCF7,NIH/3T3,C2C12,C6,PC-12
细胞定位	Nucleus
纯化	Affinity purification

抗原信息

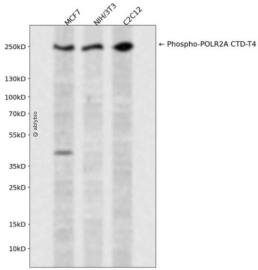
抗原信息	A phospho specific peptide corresponding to residues surrounding T4 of human POLR2A CTD repeat YSPT SPS.
序列	

靶点信息

研究背景	This gene encodes the largest subunit of RNA polymerase II, the polymerase responsible for synthesizing messenger RNA in eukaryotes. The product of this gene contains a carboxy terminal domain composed of heptapeptide repeats that are essential for polymerase activity. These repeats contain serine and threonine residues that are phosphorylated in actively transcribing RNA polymerase. In addition, this subunit, in combination with several other polymerase subunits, forms the DNA binding domain of the polymerase, a groove in which the DNA template is transcribed into RNA.
------	--

基因ID	5430
基因名	POLR2A
Swiss	P24928
别名	POLR2A;POLR2;POLRA;RPB1;RPBh1;RPO2;RPOL2;RpIILS;hRPB220;hsRPB1;Pol II

产品验证



Western blot analysis of Phospho-POLR2A CTD-T4 expressed in MCF7,NIH/3T3,C2C12 using Phospho-POLR2A CTD-T4 Rabbit pAb at 1:1000. Secondary antibody: HRP Goat Anti-Rabbit IgG (H+L) at 1:5000. Lysates/proteins: 30ug per lane. Blocking buffer: 5% non-fat dry milk in TBST. Detection: ECL Enhanced Kit. Exposure time: 120s.

实验步骤

访问官网浏览详情: www.ablybio.cn