

BIN2 Rabbit pAb

货号: **AYP23320**

产品信息

反应	Arabidopsis thaliana
宿主	Rabbit
克隆性	Polyclonal
预测反应	
应用	WB
推荐浓度	WB: 1:50 - 1:200
理论分子量	43kDa
实测分子量	43kDa
形式	Liquid
保存条件	Store at -20°C. Avoid freeze / thaw cycles. Buffer: PBS with 0.05% proclin300,50% glycerol,pH7.3.
偶联物	Unconjugated
阳性对照	Rosette leaves
细胞定位	cell cortex,cytoplasm,nucleus,plasma membrane
纯化	Affinity purification

抗原信息

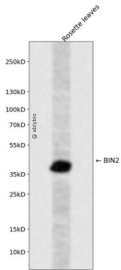
抗原信息	A synthetic peptide corresponding to a sequence within amino acids 281-380 of arabidopsis thaliana BIN2 (NP_193606.1).
序列	KAHPWHKIFHKRMPPEAIDFASRLQLQYSPSLRCTALEACAHPFFDELREPNAFLPNGRPFPPPLFNFKQEVAGSSPELVNKLIPDHIKRLGLSFLNQSQT

靶点信息

研究背景	Encodes BIN2, a member of the ATSK (shaggy-like kinase) family. BIN2 functions in the cross-talk between auxin and brassinosteroid signaling pathways. BIN2 regulates root epidermal cell fate specification by phosphorylating EGL3 and TTG1. BIN2-mediated phosphorylation appears to promote BZR1 export from the nucleus.
基因ID	827605

基因名	
Swiss	Q39011
别名	ATSK21; BRASSINOSTEROID-INSENSITIVE 2; DWARF 12; DWF12; F28A21.120; F28A21_120; SHAGGY-LIKE KINASE 21; SK21; UCU1; ULTRACURVATA 1

产品验证



Western blot analysis of BIN2 expressed in Rosette leaves using BIN2 Rabbit pAb at 1:1000. Secondary antibody: HRP Goat Anti-Rabbit IgG (H+L) at 1:5000. Lysates/proteins: 30ug per lane. Blocking buffer: 5% non-fat dry milk in TBST. Detection: ECL Enhanced Kit. Exposure time: 120s.

实验步骤

访问官网浏览详情: www.ablybio.cn