

SLC25A51 Rabbit pAb

货号: **AYP23311**

产品信息

反应	Human,Mouse,Rat
宿主	Rabbit
克隆性	Polyclonal
预测反应	
应用	WB
推荐浓度	WB: 1:500 - 1:1000
理论分子量	33kDa
实测分子量	34kDa
形式	Liquid
保存条件	Store at -20°C. Avoid freeze / thaw cycles. Buffer: PBS with 0.05% proclin300,50% glycerol,pH7.3.
偶联物	Unconjugated
阳性对照	293T,Mouse brain,Rat brain
细胞定位	mitochondrial inner membrane,mitochondrion
纯化	Affinity purification

抗原信息

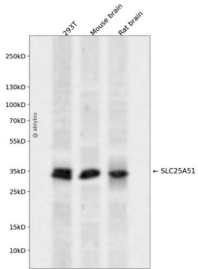
抗原信息	A synthetic peptide corresponding to a sequence within amino acids 1-100 of human SLC25A51 (NP_219480.1).
序列	MMDSEAHEKRPPILTSSKQDISPHITNVGEMKHYLCGCCAAFNNVAITFPIQKVLFRQQLYGIKTRDAILQLRRDGFRLYR GILPPLMQKTTTLALMFG

靶点信息

研究背景	Enables NAD transmembrane transporter activity. Involved in mitochondrial NAD transmembrane transport. Located in mitochondrion. Is active in mitochondrial inner membrane.
基因ID	92014
基因名	SLC25A51

Swiss	Q9H1U9
别名	CG7943; MCART1

产品验证



Western blot analysis of SLC25A51 expressed in 293T, Mouse brain, Rat brain using SLC25A51 Rabbit p Ab at 1:1000. Secondary antibody: HRP Goat Anti-Rabbit IgG (H+L) at 1:5000. Lysates/proteins: 30ug per lane. Blocking buffer: 5% non-fat dry milk in TBST. Detection: ECL Enhanced Kit. Exposure time: 1 20s.

实验步骤

访问官网浏览详情: www.ablybio.cn