

# NUCKS1 Rabbit pAb

货号: **AYP23304**

## 产品信息

反应	Human,Mouse,Rat
宿主	Rabbit
克隆性	Polyclonal
预测反应	
应用	WB
推荐浓度	<b>WB:</b> 1:500 - 1:1000
理论分子量	27kDa
实测分子量	45KDa
形式	Liquid
保存条件	Store at -20°C. Avoid freeze / thaw cycles. Buffer: PBS with 0.05% proclin300,50% glycerol,pH7.3.
偶联物	Unconjugated
阳性对照	U-251MG,HepG2,HeLa,Rat brain,Mouse lung
细胞定位	cytoplasm,nucleolus,nucleoplasm,nucleus
纯化	Affinity purification

## 抗原信息

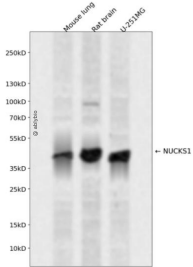
抗原信息	A synthetic peptide corresponding to a sequence within amino acids 100-200 of human NUCKS1 (NP_073568.2).
序列	ASKQREMLMEDVGSSEEEQEEDEAPFQEKDSGSEDFLMEDDDSDYGSSKKKNKMKVKKSKPERKEKKMPKPRKATVTPSPVKGKGVGRPTASKASKE

## 靶点信息

研究背景	This gene encodes a nuclear protein that is highly conserved in vertebrates. The conserved regions of the protein contain several consensus phosphorylation sites for casein kinase II and cyclin-dependent kinases , two putative nuclear localization signals, and a basic DNA-binding domain. It is phosphorylated in vivo by Cdk1 during mitosis of the cell cycle.
基因ID	64710

基因名	NUCKS1
Swiss	Q9H1E3
别名	JC7; NUCKS

## 产品验证



Western blot analysis of NUCKS1 expressed in Mouse lung,Rat brain,U-251MG using NUCKS1 Rabbit pAb at 1:1000. Secondary antibody: HRP Goat Anti-Rabbit IgG (H+L) at 1:5000. Lysates/proteins: 30ug per lane. Blocking buffer: 5% non-fat dry milk in TBST. Detection: ECL Enhanced Kit. Exposure time: 120 S.

## 实验步骤

访问官网浏览详情: [www.ablybio.cn](http://www.ablybio.cn)