

ELOVL6 Rabbit pAb

货号: **AYP23303**

产品信息

反应	Human,Mouse,Rat
宿主	Rabbit
克隆性	Polyclonal
预测反应	
应用	WB
推荐浓度	WB: 1:500 - 1:1000
理论分子量	31kDa
实测分子量	30KDa/45KDa
形式	Liquid
保存条件	Store at -20°C. Avoid freeze / thaw cycles. Buffer: PBS with 0.05% proclin300,50% glycerol,pH7.3.
偶联物	Unconjugated
阳性对照	U-251MG,HepG2,SK-BR-3,Mouse liver,Rat liver
细胞定位	endoplasmic reticulum
纯化	Affinity purification

抗原信息

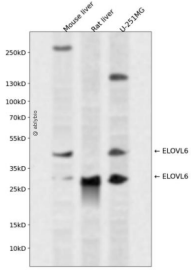
抗原信息	A synthetic peptide corresponding to a sequence within amino acids 50-150 of human ELOVL6 (NP_07699 5.1).
序列	LMNKRAKFE LRKPLV LWSLTLAVFSIFGALRTGAYMVYILMTKGLKQSVCDQGFYNGPVSKFWAYAFVLSKAPELGDTIFII LRKQKLIFLHWYHHITVLL

靶点信息

研究背景	Fatty acid elongases (EC 6.2.1.3), such as ELOVL6, use malonyl-CoA as a 2-carbon donor in the first and rate-limiting step of fatty acid elongation (Moon et al., 2001 [PubMed 11567032]).
基因ID	79071
基因名	ELOVL6

Swiss	Q9H5J4
别名	FAE; LCE; FACE; hELO2

产品验证



Western blot analysis of ELOVL6 expressed in Mouse liver,Rat liver,U-251MG using ELOVL6 Rabbit pAb at 1:1000. Secondary antibody: HRP Goat Anti-Rabbit IgG (H+L) at 1:5000. Lysates/proteins: 30ug per lane. Blocking buffer: 5% non-fat dry milk in TBST. Detection: ECL Enhanced Kit. Exposure time: 120s.

实验步骤

访问官网浏览详情: www.ablybio.cn