

# KATNB1 Rabbit pAb

货号: AYP23162

## 产品信息

反应	Mouse,Rat
宿主	Rabbit
克隆性	Polyclonal
预测反应	
应用	WB IF/ICC
推荐浓度	<b>WB:</b> 1:500 - 1:1000 <b>IF/ICC:</b> 1:50 - 1:200
理论分子量	72kDa
实测分子量	72KDa
形式	Liquid
保存条件	Store at -20°C. Avoid freeze / thaw cycles. Buffer: PBS with 0.05% proclin300,50% glycerol,pH7.3.
偶联物	Unconjugated
阳性对照	Mouse testis,Rat testis
细胞定位	centrosome,cytoplasm,cytosol,katanin complex,microtubule cytoskeleton,nucleus,plasma membrane,spindle,spindle pole
纯化	Affinity purification

## 抗原信息

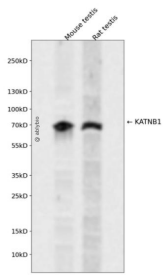
抗原信息	A synthetic peptide corresponding to a sequence within amino acids 400-500 of human KATNB1 (NP_005877.2).
序列	SEPFPAPEDDAATAKEAAKPSPAMDVQFPVPNLEVLPRPPVVASTPAPKAEPAIIPATRNEPIGLKASDFLPAVKIPQQAELVDEDAMSQIRKGHDTMCV

## 靶点信息

研究背景	Microtubules, polymers of alpha and beta tubulin subunits, form the mitotic spindle of a dividing cell and help to organize membranous organelles during interphase. Katanin is a heterodimer that consists of a 60 kDa ATPase (p60 subunit A 1) and an 80 kDa accessory protein (p80 subunit B 1). The p60 subunit acts to sever and disassemble microtubules, while the p80 subunit targets the enzyme to the centrosome. Katanin is a member of the AAA family of ATPases.
------	---

基因ID	10300
基因名	KATNB1
Swiss	Q9BVA0
别名	KAT; LIS6

## 产品验证



Western blot analysis of KATNB1 expressed in Mouse testis, Rat testis using KATNB1 Rabbit pAb at 1:1000 . Secondary antibody: HRP Goat Anti-Rabbit IgG (H+L) at 1:5000. Lysates/proteins: 30ug per lane. Blocking buffer: 5% non-fat dry milk in TBST. Detection: ECL Enhanced Kit. Exposure time: 120s.

## 实验步骤

访问官网浏览详情: [www.ablybio.cn](http://www.ablybio.cn)