

Ly-6G Rabbit pAb

货号: **AYP23152**

产品信息

反应	Mouse
宿主	Rabbit
克隆性	Polyclonal
预测反应	
应用	WB IF/ICC
推荐浓度	WB: 1:500 - 1:1000 IF/ICC: 1:50 - 1:200
理论分子量	14kDa
实测分子量	20KDa
形式	Liquid
保存条件	Store at -20°C. Avoid freeze / thaw cycles. Buffer: PBS with 0.05% proclin300,50% glycerol,pH7.3.
偶联物	Unconjugated
阳性对照	Mouse large intestine
细胞定位	external side of plasma membrane
纯化	Affinity purification

抗原信息

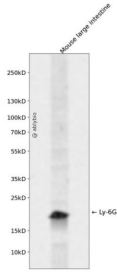
抗原信息	Recombinant fusion protein containing a sequence corresponding to amino acids 27-105 of mouse Ly-6G (NP_001297367.1).
序列	LECYNCIGVPPETSCNTTTCPFSDGFCVALEIEVIVDSHRSKVKSNLCLPICPTTLDNTEITGNAVNVKTYCCKEDLCN

靶点信息

研究背景	Located in external side of plasma membrane.
基因ID	546644
基因名	

Swiss	P35461
别名	Gr1; Gr-1; Ly-6G

产品验证



Western blot analysis of Ly-6G expressed in Mouse large intestine using Ly-6G Rabbit pAb at 1:1000. Secondary antibody: HRP Goat Anti-Rabbit IgG (H+L) at 1:5000. Lysates/proteins: 30ug per lane. Blocking buffer: 5% non-fat dry milk in TBST. Detection: ECL Enhanced Kit. Exposure time: 120s.

实验步骤

访问官网浏览详情: www.ablybio.cn