

# Timm29 Rabbit pAb

货号: AYP23127

## 产品信息

反应	Human,Mouse
宿主	Rabbit
克隆性	Polyclonal
预测反应	
应用	WB IP
推荐浓度	<b>WB:</b> 1:500 - 1:1000 <b>IP:</b> 1:500 - 1:1000
理论分子量	29kDa
实测分子量	29KDa
形式	Liquid
保存条件	Store at -20°C. Avoid freeze / thaw cycles. Buffer: PBS with 0.05% proclin300,50% glycerol,pH7.3.
偶联物	Unconjugated
阳性对照	293T,A-549,PC-3,Mouse liver
细胞定位	mitochondrial inner membrane,mitochondrial intermembrane space
纯化	Affinity purification

## 抗原信息

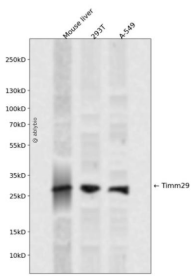
抗原信息	Recombinant fusion protein containing a sequence corresponding to amino acids 157-266 of mouse Timm 29 (NP_848734.1).
序列	YLQPRWVDFPGRILDVGFVGRWWILQNRMHDCDINDDEFHLHPAHLRVVAPHQLHSEANERLFEEKYKPIILTDDQVDQA LWEEQLQKERKDRLLALSEADSLVQSDVSR

## 靶点信息

研究背景	Component of the TIM22 complex, a complex that mediates the import and insertion of multi-pass transmembrane proteins into the mitochondrial inner membrane. The TIM22 complex forms a twin-pore translocase that uses the membrane potential as the external driving force. Required for the stability of the TIM22 complex and functions in the assembly of the TIMM22 protein into the TIM22 complex. May facilitate cooperation between TIM22 and TOM complexes by interacting with TOMM40.
------	---

基因ID	69773
基因名	
Swiss	Q8BGX2
别名	TIM29; 1810026J23Rik

## 产品验证



Western blot analysis of Timm29 expressed in Mouse liver, 293T, A-549 using Timm29 Rabbit pAb at 1:1000. Secondary antibody: HRP Goat Anti-Rabbit IgG (H+L) at 1:5000. Lysates/proteins: 30ug per lane. Blocking buffer: 5% non-fat dry milk in TBST. Detection: ECL Enhanced Kit. Exposure time: 120s.

## 实验步骤

访问官网浏览详情: [www.ablybio.cn](http://www.ablybio.cn)