

Timm22 Rabbit pAb

货号: **AYP23126**

产品信息

| | |
|-------|--|
| 反应 | Human,Mouse,Rat |
| 宿主 | Rabbit |
| 克隆性 | Polyclonal |
| 预测反应 | |
| 应用 | WB IP |
| 推荐浓度 | WB: 1:500 - 1:1000 IP: 1:100 - 1:500 |
| 理论分子量 | 20kDa |
| 实测分子量 | 20KDa |
| 形式 | Liquid |
| 保存条件 | Store at -20°C. Avoid freeze / thaw cycles. Buffer: PBS with 0.05% proclin300,50% glycerol,pH7.3. |
| 偶联物 | Unconjugated |
| 阳性对照 | T47D,Mouse brain,Rat testis,Rat brain |
| 细胞定位 | mitochondrial inner membrane,mitochondrion |
| 纯化 | Affinity purification |

抗原信息

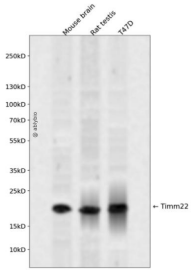
| | |
|------|---|
| 抗原信息 | Recombinant fusion protein containing a sequence corresponding to amino acids 19-121 of mouse Timm22 (NP_062792.2). |
| 序列 | AEAPLQYSLLLQYLVGDKRQPRLLPEGSLGGIPSPAKSEEQKMIERAMESCAFKAVLACVGGFVLGGAFGIFTAGIDTNVGFDPKDPYRTPTAKEVLKDMGQR |

靶点信息

| | |
|------|---|
| 研究背景 | Essential core component of the TIM22 complex, a complex that mediates the import and insertion of multi-pass transmembrane proteins into the mitochondrial inner membrane. In the TIM22 complex, it constitutes the voltage-activated and signal-gated channel. Forms a twin-pore translocase that uses the membrane potential as external driving force in 2 voltage-dependent steps (By similarity). |
| 基因ID | 56322 |

| | |
|-------|--------|
| 基因名 | |
| Swiss | Q9CQ85 |
| 别名 | Tim22 |

产品验证



Western blot analysis of Timm22 expressed in Mouse brain,Rat testis,T47D using Timm22 Rabbit pAb at 1:1000. Secondary antibody: HRP Goat Anti-Rabbit IgG (H+L) at 1:5000. Lysates/proteins: 30ug per lane. Blocking buffer: 5% non-fat dry milk in TBST. Detection: ECL Enhanced Kit. Exposure time: 120s.

实验步骤

访问官网浏览详情: www.ablybio.cn