

SPARCL1 Rabbit pAb

货号: **AYP23108**

产品信息

反应	Human,Mouse,Rat
宿主	Rabbit
克隆性	Polyclonal
预测反应	
应用	WB
推荐浓度	WB: 1:500 - 1:1000
理论分子量	75kDa
实测分子量	140KDa
形式	Liquid
保存条件	Store at -20°C. Avoid freeze / thaw cycles. Buffer: PBS with 0.01% thiomersal,50% glycerol,pH7.3.
偶联物	Unconjugated
阳性对照	Mouse brain,Rat brain
细胞定位	endoplasmic reticulum lumen,extracellular region,extracellular space,glutamatergic synapse
纯化	Affinity purification

抗原信息

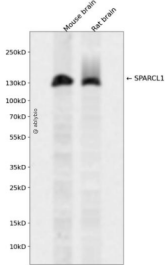
抗原信息	Recombinant fusion protein containing a sequence corresponding to amino acids 17-300 of human SPARCL1 (NP_004675.3).
序列	IP TNARLLSDHSKPTAETVAPDNTAIPSLRAEAEENEKETAVSTEDDSSHKA EKSSVLKSKEESHEQSAEQGKSSSQELGLK DQEDSDGHL SVNLEYAPTEGTLDIKEDMSEPQEKKLSENTDFLAPGVSSFTDSNQQESITKREENQEPRNYSHHQLNRS SKHSQGLRDQGNQE QDPNISNGEEEEKEPGEVGT HNDNQERKTELPREHANSKQEEDNTQSDDILEESDQPTQVSKM QEDEFDQGNQE QEDNSNAEMEEENASNVNKHIQETEWQSQEGKT

靶点信息

研究背景	Predicted to enable calcium ion binding activity; collagen binding activity; and extracellular matrix binding activity. Predicted to be involved in anatomical structure development and regulation of synapse organization. Located in extracellular space.
基因ID	8404

基因名	SPARCL1
Swiss	Q14515
别名	SC1; MAST9; PIG33; MAST 9

产品验证



Western blot analysis of SPARCL1 expressed in Mouse brain,Rat brain using SPARCL1 Rabbit pAb at 1:1000. Secondary antibody: HRP Goat Anti-Rabbit IgG (H+L) at 1:5000. Lysates/proteins: 30ug per lane. Blocking buffer: 5% non-fat dry milk in TBST. Detection: ECL Enhanced Kit. Exposure time: 120s.

实验步骤

访问官网浏览详情: www.ablybio.cn