

SEH1L Rabbit pAb

货号: **AYP23105**

产品信息

反应	Human,Mouse,Rat
宿主	Rabbit
克隆性	Polyclonal
预测反应	
应用	WB
推荐浓度	WB: 1:500 - 1:1000
理论分子量	39kDa
实测分子量	45KDa
形式	Liquid
保存条件	Store at -20°C. Avoid freeze / thaw cycles. Buffer: PBS with 0.01% thiomersal,50% glycerol,pH7.3.
偶联物	Unconjugated
阳性对照	K-562,Mouse kidney,Rat kidney,Rat thymus
细胞定位	cytosol,nuclear envelope,nuclear pore,nuclear pore outer ring
纯化	Affinity purification

抗原信息

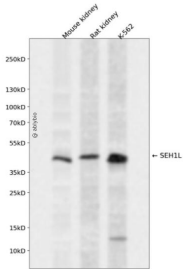
抗原信息	Recombinant fusion protein containing a sequence corresponding to amino acids 260-360 of human SEH1L (NP_112493.2).
序列	SGGPTKFEIHIVAQFDNHNSQVWRVSWNITGTVLASSGDDGCVRLWKANYMDNWKCTGILKGNNGSPVNGSSQQGTSN PSLGSTIPSLQNSLNGSSAGRKHS

靶点信息

研究背景	The protein encoded by this gene is part of a nuclear pore complex, Nup107-160. This protein contains W D repeats and shares 34% amino acid identity with yeast Seh1 and 30% identity with yeast Sec13. All constituents of the Nup107-160 complex, including this protein, specifically localize to kinetochores in mitosis. Two alternatively spliced transcript variants encoding distinct isoforms have been found for this gene.
基因ID	81929

基因名	SEH1L
Swiss	Q96EE3
别名	Seh1; SEH1A; SEH1B; SEC13L

产品验证



Western blot analysis of SEH1L expressed in Mouse kidney,Rat kidney,K-562 using SEH1L Rabbit pAb at 1:1000. Secondary antibody: HRP Goat Anti-Rabbit IgG (H+L) at 1:5000. Lysates/proteins: 30ug per lane. Blocking buffer: 5% non-fat dry milk in TBST. Detection: ECL Enhanced Kit. Exposure time: 120s.

实验步骤

访问官网浏览详情: www.ablybio.cn