

Cold1 Rabbit pAb

货号: **AYP23101**

产品信息

反应	Oryza sativa
宿主	Rabbit
克隆性	Polyclonal
预测反应	
应用	WB
推荐浓度	WB: 1:500 - 1:2000
理论分子量	53kDa
实测分子量	53kDa
形式	Liquid
保存条件	Store at -20°C. Avoid freeze / thaw cycles. Buffer: PBS with 0.05% proclin300,50% glycerol,pH7.3.
偶联物	Unconjugated
阳性对照	leaves,stems,spikes
细胞定位	plasma membrane
纯化	Affinity purification

抗原信息

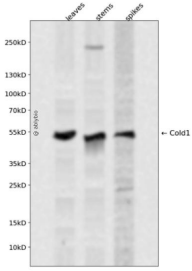
抗原信息	Recombinant protein of Oryza sativa Cold1.
序列	

靶点信息

研究背景	Involved in chilling tolerance. Interacts with the G-protein alpha subunit GPA1 to activate the calcium channel for sensing low temperature and to accelerate G-protein GTPase activity.
基因ID	4336878
基因名	
Swiss	Q7X7S8

别名	Cold1
----	-------

产品验证



Western blot analysis of Cold1 expressed in leaves, stems, spikes using Cold1 Rabbit pAb at 1:1000. Secondary antibody: HRP Goat Anti-Rabbit IgG (H+L) at 1:5000. Lysates/proteins: 30ug per lane. Blocking buffer: 5% non-fat dry milk in TBST. Detection: ECL Enhanced Kit. Exposure time: 120s.

实验步骤

访问官网浏览详情: www.ablybio.cn