

HUWE1 Rabbit pAb

货号: **AYP23083**

产品信息

反应	Human,Rat
宿主	Rabbit
克隆性	Polyclonal
预测反应	
应用	WB
推荐浓度	WB: 1:500 - 1:1000
理论分子量	481KDa
实测分子量	480KDa
形式	Liquid
保存条件	Store at -20°C. Avoid freeze / thaw cycles. Buffer: PBS with 0.05% proclin300,50% glycerol,pH7.3.
偶联物	Unconjugated
阳性对照	SKOV3,Rat brain
细胞定位	cytoplasm,cytosol,extracellular exosome,extracellular region,mitochondrion,nucleoplasm,nucleus
纯化	Affinity purification

抗原信息

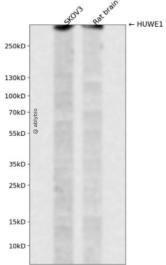
抗原信息	A synthetic peptide corresponding to a sequence within amino acids 1-100 of human HUWE1 (NP_113584.3).
序列	MKVDRTKLKKTPTPEAPADCRALIDKLVKCNDEQLLLELQIKTWNIGKCELYHWVDLLDRFDGILADAGQTVENMSWMLVCDRPEREQLKMLLLAVLNFT

靶点信息

研究背景	This gene encodes a protein containing a C-terminal HECT (E6AP type E3 ubiquitin protein ligase) domain that functions as an E3 ubiquitin ligase. The encoded protein is required for the ubiquitination and subsequent degradation of the anti-apoptotic protein Mcl1 (myeloid cell leukemia sequence 1 (BCL2-related)). This protein also ubiquitinates the p53 tumor suppressor, core histones, and DNA polymerase beta. Mutations in this gene are associated with Turner type X-linked syndromic cognitive disability.
基因ID	10075

基因名	HUWE1
Swiss	Q7Z6Z7
别名	MULE; Ib772; LASU1; MRXST; UREB1; HECTH9; URE-B1; ARF-BP1; HSPC272

产品验证



Western blot analysis of HUWE1 expressed in SKOV3,Rat brain using HUWE1 Rabbit pAb at 1:1000. Secondary antibody: HRP Goat Anti-Rabbit IgG (H+L) at 1:5000. Lysates/proteins: 30ug per lane. Blocking buffer: 5% non-fat dry milk in TBST. Detection: ECL Enhanced Kit. Exposure time: 120s.

实验步骤

访问官网浏览详情: www.ablybio.cn