

SLC38A1 Rabbit pAb

货号: AYP23078

产品信息

反应	Human,Rat
宿主	Rabbit
克隆性	Polyclonal
预测反应	
应用	WB
推荐浓度	WB: 1:500 - 1:1000
理论分子量	54kDa
实测分子量	50-70KDa
形式	Liquid
保存条件	Store at -20°C. Avoid freeze / thaw cycles. Buffer: PBS with 0.01% thiomersal,50% glycerol,pH7.3.
偶联物	Unconjugated
阳性对照	A-549,Rat heart
细胞定位	basolateral plasma membrane,external side of apical plasma membrane,extracellular exosome,plasma membrane
纯化	Affinity purification

抗原信息

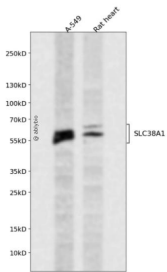
抗原信息	Recombinant fusion protein containing a sequence corresponding to amino acids 1-70 of human SLC38A1 (NP_001070952.1).
序列	MMHFKSGLELTELQNMTPEDDNISNDSNDFTEVENGQINSKFISDRESRRSLTNSHLEKKKCDEYIPGT

靶点信息

研究背景	Amino acid transporters play essential roles in the uptake of nutrients, production of energy, chemical metabolism, detoxification, and neurotransmitter cycling. SLC38A1 is an important transporter of glutamine, an intermediate in the detoxification of ammonia and the production of urea. Glutamine serves as a precursor for the synaptic transmitter, glutamate (Gu et al., 2001 [PubMed 11325958]).
基因ID	81539

基因名	SLC38A1
Swiss	Q9H2H9
别名	ATA1; NAT2; SAT1; SNAT1

产品验证



Western blot analysis of SLC38A1 expressed in A-549, Rat heart using SLC38A1 Rabbit pAb at 1:1000. Secondary antibody: HRP Goat Anti-Rabbit IgG (H+L) at 1:5000. Lysates/proteins: 30ug per lane. Blocking buffer: 5% non-fat dry milk in TBST. Detection: ECL Enhanced Kit. Exposure time: 120s.

实验步骤

访问官网浏览详情: www.ablybio.cn