

— ABLYBIO, Help Your Research



C1QTNF1 Rabbit pAb

货号: **AYP23073**

产品信息

反应	Mouse
宿主	Rabbit
克隆性	Polyclonal
预测反应	
应用	WB
推荐浓度	WB: 1:500 - 1:1000
理论分子量	31kDa
实测分子量	32KDa
形式	Liquid
保存条件	Store at -20°C. Avoid freeze / thaw cycles. Buffer: PBS with 0.05% proclin300,50% glycerol,pH7.3.
偶联物	Unconjugated
阳性对照	Mouse placenta
细胞定位	extracellular space,plasma membrane
纯化	Affinity purification

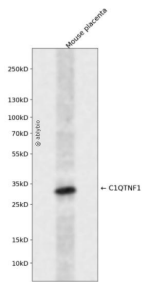
抗原信息

抗原信息	Recombinant fusion protein containing a sequence corresponding to amino acids 142-281 of human C1QTNF1 (NP_112230.1).
------	---

靶点信息

研究背景	Enables collagen binding activity. Involved in several processes, including negative regulation of platelet aggregation; positive regulation of aldosterone secretion; and positive regulation of cytosolic calcium ion concentration. Located in extracellular space. Is integral component of plasma membrane.
基因ID	114897
基因名	C1QTNF1
Swiss	Q9BXJ1 (https://www.uniprot.org/uniprotkb/Q9BXJ1/entry)
别名	GIP,CTRP1,ZSIG37,C1QTNF1 Rabbit pAb,C1QTNF1,G protein-coupled receptor-interacting protein

产品验证



Western blot analysis of C1QTNF1 expressed in Mouse placenta using C1QTNF1 Rabbit pAb at 1:1000. Secondary antibody: HRP Goat Anti-Rabbit IgG (H+L) at 1:5000. Lysates/proteins: 30ug per lane. Blocking buffer: 5% non-fat dry milk in TBST. Detection: ECL Enhanced Kit. Exposure time: 120s.

实验步骤

访问官网浏览详情: www.ablybio.cn (<https://www.ablybio.cn/www.ablybio.cn>)