

LF1 Rabbit pAb

货号: **AYP23059**

产品信息

反应	Oryza sativa
宿主	Rabbit
克隆性	Polyclonal
预测反应	
应用	WB
推荐浓度	WB: 1:500 - 1:2000
理论分子量	92kDa
实测分子量	92kDa
形式	Liquid
保存条件	Store at -20°C. Avoid freeze / thaw cycles. Buffer: PBS with 0.05% proclin300,50% glycerol,pH7.3.
偶联物	Unconjugated
阳性对照	Spikes
细胞定位	nucleus
纯化	Affinity purification

抗原信息

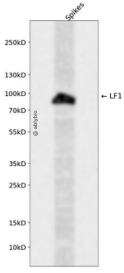
抗原信息	Recombinant protein of Oryza sativa LF1.
序列	

靶点信息

研究背景	the mutation of LF1 induces ectopic expression of OSH1, which results in the initiation of lateral meristems to generate lateral florets in the axil of the sterile lemma.
基因ID	4331345
基因名	
Swiss	Q6TAQ6

别名	OSHB1; LF1
----	------------

产品验证



Western blot analysis of LF1 expressed in Spikes using LF1 Rabbit pAb at 1:1000. Secondary antibody: HRP Goat Anti-Rabbit IgG (H+L) at 1:5000. Lysates/proteins: 30ug per lane. Blocking buffer: 5% non-fat dry milk in TBST. Detection: ECL Enhanced Kit. Exposure time: 120s.

实验步骤

访问官网浏览详情: www.ablybio.cn