

OsGI Rabbit pAb

货号: **AYP23055**

产品信息

反应	Oryza sativa
宿主	Rabbit
克隆性	Polyclonal
预测反应	
应用	WB
推荐浓度	WB: 1:500 - 1:2000
理论分子量	127kDa
实测分子量	100kDa
形式	Liquid
保存条件	Store at -20°C. Avoid freeze / thaw cycles. Buffer: PBS with 0.05% proclin300,50% glycerol,pH7.3.
偶联物	Unconjugated
阳性对照	leaves,stems
细胞定位	
纯化	Affinity purification

抗原信息

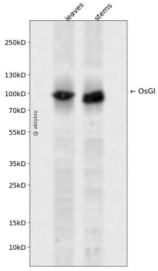
抗原信息	Recombinant protein of Oryza sativa OsGI.
序列	

靶点信息

研究背景	Involved in regulation of circadian rhythm, and in the control of the photoperiodic flowering. Acts as suppressor of flowering under short-day (SD) and long-day (LD) conditions. Activates Hd1/CONSTANS gene.
基因ID	4325329
基因名	
Swiss	Q0JQ44

别名	OsGI
----	------

产品验证



Western blot analysis of OsGI expressed in leaves, stems using OsGI Rabbit pAb at 1:1000. Secondary antibody: HRP Goat Anti-Rabbit IgG (H+L) at 1:5000. Lysates/proteins: 30ug per lane. Blocking buffer: 5% non-fat dry milk in TBST. Detection: ECL Enhanced Kit. Exposure time: 120s.

实验步骤

访问官网浏览详情: www.ablybio.cn