

BC12 Rabbit pAb

货号: **AYP22960**

产品信息

反应	Oryza sativa
宿主	Rabbit
克隆性	Polyclonal
预测反应	
应用	WB
推荐浓度	WB: 1:500 - 1:2000
理论分子量	116kDa
实测分子量	116kDa
形式	Liquid
保存条件	Store at -20°C. Avoid freeze / thaw cycles. Buffer: PBS with 0.05% proclin300,50% glycerol,pH7.3.
偶联物	Unconjugated
阳性对照	Stems
细胞定位	cytoplasm,cytoskeleton,nucleus
纯化	Affinity purification

抗原信息

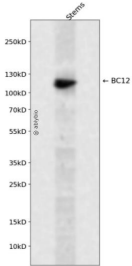
抗原信息	Recombinant protein of Oryza sativa BC12.
序列	

靶点信息

研究背景	Microtubule-dependent motor protein involved in the control of the oriented deposition of cellulose microfibrils. Involved in wall biogenesis and modification, and contributes to cell-cycle progression and cell division. Acts as a transcriptional activator in gibberellic acid (GA) biosynthesis pathway. Binds specifically to the DNA sequence 5'-ACCAACTTGAA-3' of the ent-kaurene oxidase 2 (CYP701A6 or OsKO2) promoter. May regulate CYP701A6 gene expression and mediates cell elongation by regulating the GA biosynthesis pathway
基因ID	4346402

基因名	
Swiss	Q6YUL8
别名	BC12

产品验证



Western blot analysis of BC12 expressed in Stems using BC12 Rabbit pAb at 1:1000. Secondary antibody: HRP Goat Anti-Rabbit IgG (H+L) at 1:5000. Lysates/proteins: 30ug per lane. Blocking buffer: 5% non-fat dry milk in TBST. Detection: ECL Enhanced Kit. Exposure time: 120s.

实验步骤

访问官网浏览详情: www.ablybio.cn