

GID Rabbit pAb

货号: **AYP22924**

产品信息

反应	Oryza sativa
宿主	Rabbit
克隆性	Polyclonal
预测反应	
应用	WB
推荐浓度	WB: 1:500 - 1:2000
理论分子量	39kDa
实测分子量	50KDa
形式	Liquid
保存条件	Store at -20°C. Avoid freeze / thaw cycles. Buffer: PBS with 0.05% proclin300,50% glycerol,pH7.3.
偶联物	Unconjugated
阳性对照	leaves, stems, spikes, milk grains
细胞定位	cytoplasm, nucleus
纯化	Affinity purification

抗原信息

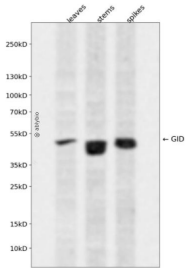
抗原信息	Recombinant protein of Oryza sativa GID.
序列	

靶点信息

研究背景	Functions as soluble gibberellin (GA) receptor. GA is an essential hormone that regulates growth and development in plants. Binds with high affinity the biologically active GAs such as GA1, GA3 and GA4, but has low or no affinity for the biologically inactive GAs. Upon GA-binding, it interacts with the DELLA protein SLR1, a repressor of GA signaling. This leads to SLR1 degradation by the proteasome, allowing the GA signaling pathway.
基因ID	4338764

基因名	
Swiss	Q6L545
别名	GID1

产品验证



Western blot analysis of GID expressed in leaves, stems, spikes using GID Rabbit pAb at 1:1000. Secondary antibody: HRP Goat Anti-Rabbit IgG (H+L) at 1:5000. Lysates/proteins: 30ug per lane. Blocking buffer: 5% non-fat dry milk in TBST. Detection: ECL Enhanced Kit. Exposure time: 120s.

实验步骤

访问官网浏览详情: www.ablybio.cn