

CSA Rabbit pAb

货号: **AYP22922**

产品信息

反应	Oryza sativa
宿主	Rabbit
克隆性	Polyclonal
预测反应	
应用	WB
推荐浓度	WB: 1:500 - 1:2000
理论分子量	36kDa
实测分子量	50KDa
形式	Liquid
保存条件	Store at -20°C. Avoid freeze / thaw cycles. Buffer: PBS with 0.01% thiomersal,50% glycerol,pH7.3.
偶联物	Unconjugated
阳性对照	stems,spikes,milk grains
细胞定位	
纯化	Affinity purification

抗原信息

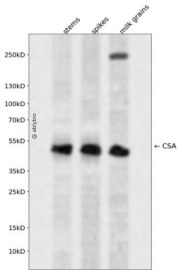
抗原信息	Recombinant protein of Oryza sativa CSA.
序列	

靶点信息

研究背景	Transcription factor required for sugar partitioning from leaves to anthers during male reproductive development. Required for the production of functional pollen grains. Binds to the promoter of the anther-specific sugar transporter MST8 and regulates its expression. Regulates the expression of genes involved in sugar partitioning in flower, such as the sugar transporter SUT3, the invertase INV4, the UDP-glucose pyrophosphorylase UGP2 and the starch synthase WAXY
基因ID	4325181

基因名	
Swiss	
别名	CSA

产品验证



Western blot analysis of CSA expressed in stems,spikes,milk grains using CSA Rabbit pAb at 1:1000. Secondary antibody: HRP Goat Anti-Rabbit IgG (H+L) at 1:5000. Lysates/proteins: 30ug per lane. Blocking buffer: 5% non-fat dry milk in TBST. Detection: ECL Enhanced Kit. Exposure time: 120s.

实验步骤

访问官网浏览详情: www.ablybio.cn