

TOM1L2 Rabbit pAb

货号: **AYP22913**

产品信息

反应	Human,Mouse,Rat
宿主	Rabbit
克隆性	Polyclonal
预测反应	
应用	WB
推荐浓度	WB: 1:500 - 1:1000
理论分子量	55kDa
实测分子量	60kDa
形式	Liquid
保存条件	Store at -20°C. Avoid freeze / thaw cycles. Buffer: PBS with 0.05% proclin300,50% glycerol,pH7.3.
偶联物	Unconjugated
阳性对照	Mouse brain,Rat brain
细胞定位	endosome,extracellular exosome
纯化	Affinity purification

抗原信息

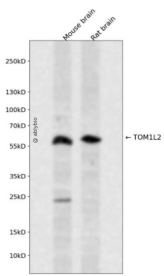
抗原信息	Recombinant fusion protein containing a sequence corresponding to amino acids 310-450 of human TOM1L2 (NP_001076437.1).
序列	SGRSVQNASNGVLNEVTEDNLIDLPGSPAVVSPMVGNTAPPSSLSSQLAGLDLGTESVSGTLSSLQQCNPDRGDFMFQAQTRGNSLAEQRKTVTYEDPQAVGGLASALDNRKQSSEGIPVAQPSVMDDIEVWLRDLDLKGDD

靶点信息

研究背景	This gene belongs to a small gene family whose members have an N-terminal VHS domain followed by a GAT domain; domains which typically participate in vesicular trafficking. The canonical protein encoded by this gene also has a C-terminal clathrin binding motif. This protein has been shown to interact with Tollip, clathrin and ubiquitin and is thought to play a role in endosomal sorting. This gene resides in the 3.7 Mb deletion of chromosome region 17p11.2 that is associated with Smith-Magenis syndrome. Alternative splicing results in multiple transcript variants encoding distinct proteins.
------	--

基因ID	146691
基因名	TOM1L2
Swiss	Q6ZVM7
别名	

产品验证



Western blot analysis of TOM1L2 expressed in Mouse brain,Rat brain using TOM1L2 Rabbit pAb at 1:1000. Secondary antibody: HRP Goat Anti-Rabbit IgG (H+L) at 1:5000. Lysates/proteins: 30ug per lane. Blocking buffer: 5% non-fat dry milk in TBST. Detection: ECL Enhanced Kit. Exposure time: 120s.

实验步骤

访问官网浏览详情: www.ablybio.cn