

CUEDC1 Rabbit pAb

货号: **AYP22910**

产品信息

反应	Human,Rat
宿主	Rabbit
克隆性	Polyclonal
预测反应	
应用	WB
推荐浓度	WB: 1:500 - 1:1000
理论分子量	42kDa
实测分子量	42KDa
形式	Liquid
保存条件	Store at -20°C. Avoid freeze / thaw cycles. Buffer: PBS with 0.05% proclin300,50% glycerol,pH7.3.
偶联物	Unconjugated
阳性对照	A-549,Rat brain
细胞定位	
纯化	Affinity purification

抗原信息

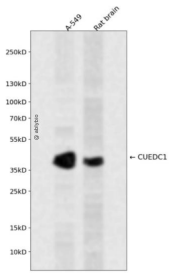
抗原信息	Recombinant fusion protein containing a sequence corresponding to amino acids 187-386 of human CUE DC1 (NP_001258804.1).
序列	RILPQQLDISIQGNAGGPKPGSGEGCPPAMAGPGPGDQESRWKQYLEDERIALFLQNEEFMKELQRNRDFLLALERDRLKY ESQKSKSSSVAVGNDGFGFSSPVPGTGDANPAVSEDALFRDKLKHMGKSTRRKLFEARAFSEKTKMRKSKRKHLLKHQS LGAAASTANLLDDVEGHACDEDFRGRRQEAPKVEEGLREGQ

靶点信息

研究背景	Predicted to enable ubiquitin binding activity.
基因ID	404093
基因名	CUEDC1

Swiss	Q9NWM3
别名	

产品验证



Western blot analysis of CUEDC1 expressed in A-549, Rat brain using CUEDC1 Rabbit pAb at 1:1000. Secondary antibody: HRP Goat Anti-Rabbit IgG (H+L) at 1:5000. Lysates/proteins: 30ug per lane. Blocking buffer: 5% non-fat dry milk in TBST. Detection: ECL Enhanced Kit. Exposure time: 120s.

实验步骤

访问官网浏览详情: www.ablybio.cn