

# SEC63 Rabbit pAb

货号: **AYP22907**

## 产品信息

反应	Human,Mouse,Rat
宿主	Rabbit
克隆性	Polyclonal
预测反应	
应用	WB
推荐浓度	<b>WB:</b> 1:500 - 1:1000
理论分子量	87kDa
实测分子量	100kDa
形式	Liquid
保存条件	Store at -20°C. Avoid freeze / thaw cycles. Buffer: PBS with 0.05% proclin300,50% glycerol,pH7.3.
偶联物	Unconjugated
阳性对照	HepG2,Mouse liver,Mouse brain,Rat lung
细胞定位	endoplasmic reticulum
纯化	Affinity purification

## 抗原信息

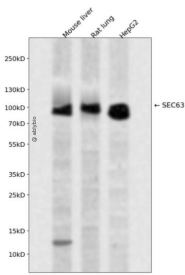
抗原信息	Recombinant fusion protein containing a sequence corresponding to amino acids 595-720 of human SEC63 (NP_009145.1).
序列	RDSDREQDEKQNKDDEAEWQELQSQIRKERALLETKSKITHPVYSLYFPEEKQEWWWLYIADRKEQTLISMPYHVCTLK DTEEVELKFPAPGKPGNYQYTVFLRSDSYMGLDQIKPLKLEVHEAK

## 靶点信息

研究背景	The Sec61 complex is the central component of the protein translocation apparatus of the endoplasmic reticulum (ER) membrane. The protein encoded by this gene and SEC62 protein are found to be associated with ribosome-free SEC61 complex. It is speculated that Sec61-Sec62-Sec63 may perform post-translational protein translocation into the ER. The Sec61-Sec62-Sec63 complex might also perform the backward transport of ER proteins that are subject to the ubiquitin-proteasome-dependent degradation pathway. The encoded protein is an integral membrane protein located in the rough ER.
------	---

基因ID	11231
基因名	SEC63
Swiss	Q9UGP8
别名	ERdj2; PCLD2; SEC63L; DNAJC23; PRO2507

## 产品验证



Western blot analysis of SEC63 expressed in Mouse liver, Rat lung, HepG2 using SEC63 Rabbit pAb at 1:1000. Secondary antibody: HRP Goat Anti-Rabbit IgG (H+L) at 1:5000. Lysates/proteins: 30ug per lane. Blocking buffer: 5% non-fat dry milk in TBST. Detection: ECL Enhanced Kit. Exposure time: 120s.

## 实验步骤

访问官网浏览详情: [www.ablybio.cn](http://www.ablybio.cn)