

CD68 Rabbit pAb

货号: **AYP22903**

产品信息

反应	Human,Mouse
宿主	Rabbit
克隆性	Polyclonal
预测反应	
应用	WB IF/ICC
推荐浓度	WB: 1:500 - 1:1000 IF/ICC: 1:50 - 1:200
理论分子量	34kDa
实测分子量	80kDa
形式	Liquid
保存条件	Store at -20°C. Avoid freeze / thaw cycles. Buffer: PBS with 0.05% proclin300,50% glycerol,pH7.3.
偶联物	Unconjugated
阳性对照	Raji,RAW264.7
细胞定位	lysosome,plasma membrane
纯化	Affinity purification

抗原信息

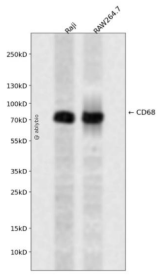
抗原信息	A synthetic peptide corresponding to a sequence within amino acids 50-150 of mouse CD68 (NP_0012779 87.1).
序列	SHRPTTTSHGNTVHTSSGPTTVTHNPATTTSHGNATISHATVSPTTNGTATSPRSSTVGPHPGPPPPSPSPRSKALGNY TWANGSQPCVQLQAQIQIRI

靶点信息

研究背景	Could play a role in phagocytic activities of tissue macrophages, both in intracellular lysosomal metabolism and extracellular cell-cell and cell-pathogen interactions. Binds to tissue- and organ-specific lectins or selectins, allowing homing of macrophage subsets to particular sites. Rapid recirculation of CD68 from endosomes and lysosomes to the plasma membrane may allow macrophages to crawl over selectin-bearing substrates or other cells.
------	---

基因ID	12514
基因名	
Swiss	P31996
别名	La; ma; Sca; gp11; Lamp4; gp110; Scard1

产品验证



Western blot analysis of CD68 expressed in Raji,RAW264.7 using CD68 Rabbit pAb at 1:1000. Secondary antibody: HRP Goat Anti-Rabbit IgG (H+L) at 1:5000. Lysates/proteins: 30ug per lane. Blocking buffer: 5% non-fat dry milk in TBST. Detection: ECL Enhanced Kit. Exposure time: 120s.

实验步骤

访问官网浏览详情: www.ablybio.cn