

LAGE3 Rabbit pAb

货号: **AYP22900**

产品信息

反应	Human
宿主	Rabbit
克隆性	Polyclonal
预测反应	
应用	WB
推荐浓度	WB: 1:500 - 1:1000
理论分子量	14kDa
实测分子量	17KDa
形式	Liquid
保存条件	Store at -20°C. Avoid freeze / thaw cycles. Buffer: PBS with 0.01% thiomersal, 50% glycerol, pH7.3.
偶联物	Unconjugated
阳性对照	HepG2, NCI-H460, BxPC-3
细胞定位	cytoplasm, nuclear body, nucleoplasm, nucleus
纯化	Affinity purification

抗原信息

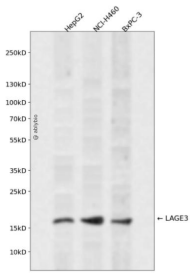
抗原信息	Recombinant fusion protein containing a sequence corresponding to amino acids 1-143 of human LAGE3 (NP_006005.2).
序列	MRDADADAGGGADGGDGRGGHSCRGGVDTAAPAGGAPPAHAPGPRDAASAARGSRMRPHIFTLSPFPPTLEAEI AHGSLAPDAEPHQRVVGKDLTVSGRILVVRWKAEDCRLLRISVINFLDQLSLVVRTMQRFQPPVSR

靶点信息

研究背景	This gene belongs to the ESO/LAGE gene family, members of which are clustered together on chromosome Xq28, and have similar exon-intron structures. Unlike the other family members which are normally expressed only in testis and activated in a wide range of human tumors, this gene is ubiquitously expressed in somatic tissues. The latter, combined with the finding that it is highly conserved in mouse and rat, suggests that the encoded protein is functionally important. An intronless pseudogene with high sequence similarity to this gene is located on chromosome 9.
------	---

基因ID	8270
基因名	LAGE3
Swiss	Q14657
别名	CVG5; ESO3; Pcc1; ITBA2; GAMOS2; DXS9879E; DXS9951E

产品验证



Western blot analysis of LAGE3 expressed in HepG2, NCI-H460, BxPC-3 using LAGE3 Rabbit pAb at 1:1000. Secondary antibody: HRP Goat Anti-Rabbit IgG (H+L) at 1:5000. Lysates/proteins: 30ug per lane. Blocking buffer: 5% non-fat dry milk in TBST. Detection: ECL Enhanced Kit. Exposure time: 120s.

实验步骤

访问官网浏览详情: www.ablybio.cn