

CD300LB Rabbit pAb

货号: **AYP22897**

产品信息

反应	Human,Mouse,Rat
宿主	Rabbit
克隆性	Polyclonal
预测反应	
应用	WB
推荐浓度	WB: 1:500 - 1:1000
理论分子量	22kDa
实测分子量	23KDa
形式	Liquid
保存条件	Store at -20°C. Avoid freeze / thaw cycles. Buffer: PBS with 0.01% thiomersal,50% glycerol,pH7.3.
偶联物	Unconjugated
阳性对照	Mouse lung,Rat lung
细胞定位	plasma membrane
纯化	Affinity purification

抗原信息

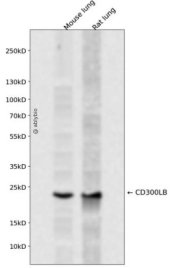
抗原信息	Recombinant fusion protein containing a sequence corresponding to amino acids 1-201 of human CD300LB (NP_777552.3).
序列	MWLPPALLLLSLSGCFSIQGPESVRAPEQGSALTQCHYKQGWETIKWWCRCRVWDTCILIEIRGSEQGEKSDRVSIKD NQKDRFTFTVMEGLRRDDADVWCGIERRGPDLTQVKVIVDPEGAASTTASSPTNSNMAVFIGSHKRNHYMLLVFKV PILLILVTAILWLKGSQRVPEEPGEQPIYMNFEPLTKDMAT

靶点信息

研究背景	CD300LB is a nonclassical activating receptor of the immunoglobulin (Ig) superfamily expressed on myeloid cells (Martinez-Barriocanal and Sayos)
基因ID	124599

基因名	CD300LB
Swiss	A8K4G0
别名	CLM7; CLM-7; IREM3; TREM5; CD300b; IREM-3; TREM-5; CMRF35-A2

产品验证



Western blot analysis of CD300LB expressed in Mouse lung,Rat lung using CD300LB Rabbit pAb at 1:1000. Secondary antibody: HRP Goat Anti-Rabbit IgG (H+L) at 1:5000. Lysates/proteins: 30ug per lane. Blocking buffer: 5% non-fat dry milk in TBST. Detection: ECL Enhanced Kit. Exposure time: 120s.

实验步骤

访问官网浏览详情: www.ablybio.cn