

TASL Rabbit pAb

货号: **AYP22873**

产品信息

反应	Human,Mouse
宿主	Rabbit
克隆性	Polyclonal
预测反应	
应用	WB IHC
推荐浓度	WB: 1:500 - 1:1000 IHC: 1:50 - 1:200
理论分子量	33kDa
实测分子量	35KDa
形式	Liquid
保存条件	Store at -20°C. Avoid freeze / thaw cycles. Buffer: PBS with 0.05% proclin300,50% glycerol,pH7.3.
偶联物	Unconjugated
阳性对照	Mouse lung
细胞定位	nucleoplasm
纯化	Affinity purification

抗原信息

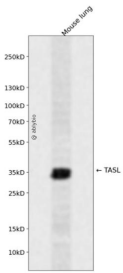
抗原信息	Recombinant fusion protein containing a sequence corresponding to amino acids 96-196 of human TASL (NP_079435.1).
序列	NLAAVEICRDASRETYLVPSSCKSICKNYNDLQIAGGQVMAINSVTTFPSESSFYEGPLLKSSEIPLPMEDSISTQPSPDFPQ KPIQRYSSYWRITSIKEK

靶点信息

研究背景	Innate immune adapter that mediates the recruitment and activation of IRF5 downstream of endolysosomal toll-like receptors TLR7, TLR8 and TLR9. Following recruitment to endolysosome by SLC15A4 downstream of TLR7, TLR8 and TLR9, specifically recruits IRF5 transcription factor via its pLxIS motif, leading to IRF5 activation and subsequent expression of type I interferons. Plays a role in the regulation of endolysosomal pH in immune cells such as B-cells, dendritic cells and monocytes.
------	---

基因ID	80231
基因名	CXorf21
Swiss	Q9HAI6
别名	CXorf21

产品验证



Western blot analysis of TASL expressed in Mouse lung using TASL Rabbit pAb at 1:1000. Secondary antibody: HRP Goat Anti-Rabbit IgG (H+L) at 1:5000. Lysates/proteins: 30ug per lane. Blocking buffer: 5% non-fat dry milk in TBST. Detection: ECL Enhanced Kit. Exposure time: 120s.

实验步骤

访问官网浏览详情: www.ablybio.cn