

GOLGB1 Rabbit pAb

货号: AYP22862

产品信息

反应	Human
宿主	Rabbit
克隆性	Polyclonal
预测反应	
应用	WB IHC IF/ICC
推荐浓度	WB: 1:500 - 1:1000 IHC: 1:50 - 1:200 IF/ICC: 1:50 - 1:200
理论分子量	376kDa
实测分子量	372KDa
形式	Liquid
保存条件	Store at -20°C. Avoid freeze / thaw cycles. Buffer: PBS with 0.05% proclin300,50% glycerol,pH7.3.
偶联物	Unconjugated
阳性对照	HeLa
细胞定位	cis-Golgi network,cytosol,endoplasmic reticulum-Golgi intermediate compartment,Golgi apparatus,Golgi stack
纯化	Affinity purification

抗原信息

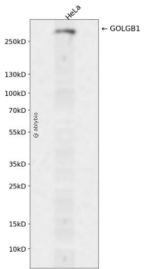
抗原信息	Recombinant fusion protein containing a sequence corresponding to amino acids 1704-1797 of human GOLGB1 (NP_004478.3).
序列	HPAGDTAKECMETLLSSNASMKEELERVKMEYETLSKKFQSLMSEKDSLSEEVQDLKHQIEGNVSKQANLEATEKHNDNQT NVTEEGTQSIPGET

靶点信息

研究背景	May participate in forming intercisternal cross-bridges of the Golgi complex.
基因ID	2804

基因名	GOLGB1
Swiss	Q14789
别名	GCP; GCP372; GOLIM1

产品验证



Western blot analysis of GOLGB1 expressed in HeLa using GOLGB1 Rabbit pAb at 1:1000. Secondary antibody: HRP Goat Anti-Rabbit IgG (H+L) at 1:5000. Lysates/proteins: 30ug per lane. Blocking buffer: 5% non-fat dry milk in TBST. Detection: ECL Enhanced Kit. Exposure time: 120s.

实验步骤

访问官网浏览详情: www.ablybio.cn