

— ABLYBIO, Help Your Research



TET1 Rabbit pAb

货号: **AYP22856**

产品信息

反应	Human,Mouse,Rat
宿主	Rabbit
克隆性	Polyclonal
预测反应	
应用	WB IHC
推荐浓度	WB: 1:500 - 1:2000 IHC: 1:50 - 1:200
理论分子量	219kDa
实测分子量	250KDa
形式	Liquid
保存条件	Store at -20°C. Avoid freeze / thaw cycles. Buffer: PBS with 0.05% proclin300,50% glycerol,pH7.3.
偶联物	Unconjugated
阳性对照	Mouse testis,Rat heart
细胞定位	nucleoplasm,nucleus
纯化	Affinity purification

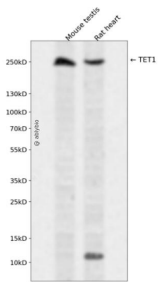
抗原信息

抗原信息	Recombinant fusion protein containing a sequence corresponding to amino acids 1749-1902 of mouse TE T1 (NP_001240786.1).
------	--

靶点信息

研究背景	Enables methylcytosine dioxygenase activity. Involved in several processes, including dendrite morphogenesis; inner cell mass cell differentiation; and protein O-linked glycosylation. Acts upstream of or within DNA demethylation; regulation of DNA methylation; and regulation of genetic imprinting. Located in nucleus. Is expressed in several structures, including brain; early conceptus; embryo ectoderm; lower urogenital tract; and reproductive system. Orthologous to human TET1 (tet methylcytosine dioxygenase 1).
基因ID	52463
基因名	Tet1
Swiss	Q3URK3 (https://www.uniprot.org/uniprotkb/Q3URK3/entry)
别名	LCX,Cxxc6,AA517754,BB001228,D10Ert17,mKIAA1676,D10Ert17e,2510010B09Rik,TET1 Rabbit pAb,Tet1,CXXC-type zinc finger protein 6,Ten-eleven translocation 1 gene protein homolog,Kiaa1676

产品验证



Western blot analysis of TET1 expressed in Mouse testis,Rat heart using TET1 Rabbit pAb at 1:1000. Secondary antibody: HRP Goat Anti-Rabbit IgG (H+L) at 1:5000. Lysates/proteins: 30ug per lane. Blocking buffer: 5% non-fat dry milk in TBST. Detection: ECL Enhanced Kit. Exposure time: 120s.

实验步骤

访问官网浏览详情: www.ablybio.cn (<https://www.ablybio.cn/www.ablybio.cn>)