

# PIF4 Rabbit pAb

货号: **AYP22817**

## 产品信息

反应	Arabidopsis thaliana
宿主	Rabbit
克隆性	Polyclonal
预测反应	
应用	WB
推荐浓度	<b>WB:</b> 1:500 - 1:1000
理论分子量	48kDa
实测分子量	55KDa
形式	Liquid
保存条件	Store at -20°C. Avoid freeze / thaw cycles. Buffer: PBS with 0.05% proclin300,50% glycerol,pH7.3.
偶联物	Unconjugated
阳性对照	seedling,rosette leaf
细胞定位	nucleus
纯化	Affinity purification

## 抗原信息

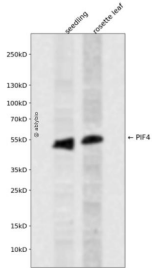
抗原信息	A synthetic peptide corresponding to a sequence within amino acids 300-400 of arabidopsis thaliana PIF4 (NP_565991.2).
序列	IDYLKSLQLQLQVMWMSGMAAAAASAPMMFPGVQPQQFIRQIQSPVQLPRFPVMDQSAIQNNPGLVCQNPVQNQIIS DRFARYIGGFPHMQAATQMQPME

## 靶点信息

研究背景	Isolated as a semidominant mutation defective in red -light responses. Encodes a nuclear localized bHLH protein that interacts with active PhyB protein. Negatively regulates phyB mediated red light responses. Involved in shade avoidance response. Protein abundance is negatively regulated by PhyB.
基因ID	818903

基因名	
Swiss	Q8W2F3
别名	AtPIF4; MFL8.13; MFL8_13; phytochrome interacting factor 4; SRL2

## 产品验证



Western blot analysis of PIF4 expressed in seedling,rosette leaf using PIF4 Rabbit pAb at 1:1000. Secondary antibody: HRP Goat Anti-Rabbit IgG (H+L) at 1:5000. Lysates/proteins: 30ug per lane. Blocking buffer: 5 % non-fat dry milk in TBST. Detection: ECL Enhanced Kit. Exposure time: 120s.

## 实验步骤

访问官网浏览详情: [www.ablybio.cn](http://www.ablybio.cn)