

# NKX6-1 Rabbit pAb

货号: AYP22732

## 产品信息

反应	Human,Mouse,Rat
宿主	Rabbit
克隆性	Polyclonal
预测反应	
应用	WB IHC
推荐浓度	<b>WB:</b> 1:100 - 1:500 <b>IHC:</b> 1:50 - 1:200
理论分子量	37kDa
实测分子量	45KDa/46KDa
形式	Liquid
保存条件	Store at -20°C. Avoid freeze / thaw cycles. Buffer: PBS with 0.05% proclin300,50% glycerol,pH7.3.
偶联物	Unconjugated
阳性对照	BxPC-3,Rat pancreas
细胞定位	extracellular exosome,nucleus
纯化	Affinity purification

## 抗原信息

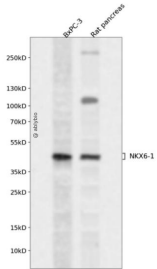
抗原信息	A synthetic peptide corresponding to a sequence within amino acids 1-100 of human NKX6-1 (NP_006159 .2).
序列	MLAVGAMEGTRQS AFLLSPP LAALH SMAEMKTPLYPAAYPLPAGPPSSSSSSSSSSPSPPLGTHNPGGLKPPATGGLS SLGSP PQLSAATPHGIND

## 靶点信息

研究背景	In the pancreas, NKX6.1 is required for the development of beta cells and is a potent bifunctional transcription regulator that binds to AT-rich sequences within the promoter region of target genes lype et al.
基因ID	4825

基因名	NKX6-1
Swiss	P78426
别名	NKX6A; NKX6.1

## 产品验证



Western blot analysis of NKX6-1 expressed in BxPC-3, Rat pancreas using NKX6-1 Rabbit pAb at 1:1000. Secondary antibody: HRP Goat Anti-Rabbit IgG (H+L) at 1:5000. Lysates/proteins: 30ug per lane. Blocking buffer: 5% non-fat dry milk in TBST. Detection: ECL Enhanced Kit. Exposure time: 120s.

## 实验步骤

访问官网浏览详情: [www.ablybio.cn](http://www.ablybio.cn)