

SIGLEC10 Rabbit pAb

货号: AYP22716

产品信息

反应	Human,Rat
宿主	Rabbit
克隆性	Polyclonal
预测反应	
应用	WB
推荐浓度	WB: 1:500 - 1:1000
理论分子量	76kDa
实测分子量	100KDa
形式	Liquid
保存条件	Store at -20°C. Avoid freeze / thaw cycles. Buffer: PBS with 0.05% proclin300,50% glycerol,pH7.3.
偶联物	Unconjugated
阳性对照	Raji,Rat lung
细胞定位	extracellular region,plasma membrane
纯化	Affinity purification

抗原信息

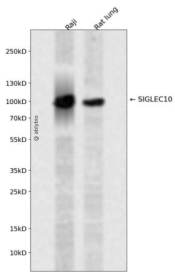
抗原信息	Recombinant fusion protein containing a sequence corresponding to amino acids 627-697 of human SIGLEC10 (NP_149121.2).
序列	GAPSPESKKNQKKQYQLPSFPEPKSSTQAPESQESQEELHYATLNFPGVRRPRPEARMPKGTQADYAEVKFQ

靶点信息

研究背景	SIGLECs are members of the immunoglobulin superfamily that are expressed on the cell surface. Most SIGLECs have 1 or more cytoplasmic immune receptor tyrosine-based inhibitory motifs, or ITIMs. SIGLECs are typically expressed on cells of the innate immune system, with the exception of the B-cell expressed SIGLEC6 (MIM 604405).
基因ID	89790

基因名	SIGLEC10
Swiss	Q96LC7
别名	SLG2; PRO940; SIGLEC-10

产品验证



Western blot analysis of SIGLEC10 expressed in Raji,Rat lung using SIGLEC10 Rabbit pAb at 1:1000. Secondary antibody: HRP Goat Anti-Rabbit IgG (H+L) at 1:5000. Lysates/proteins: 30ug per lane. Blocking buffer: 5% non-fat dry milk in TBST. Detection: ECL Enhanced Kit. Exposure time: 120s.

实验步骤

访问官网浏览详情: www.ablybio.cn