

Phospho-TDP-43/TARDB-S409/S410 Rabbit pAb

货号: AYP22715

产品信息

反应	Human
宿主	Rabbit
克隆性	Polyclonal
预测反应	
应用	DB WB
推荐浓度	DB: 1:500 - 1:1000 WB: 1:500 - 1:2000
理论分子量	31kDa/44kDa
实测分子量	31kDa/44kDa
形式	Liquid
保存条件	Store at -20°C. Avoid freeze / thaw cycles. Buffer: PBS with 0.05% proclin300,50% glycerol,pH7.3.
偶联物	Unconjugated
阳性对照	
细胞定位	Nucleus
纯化	Affinity purification

抗原信息

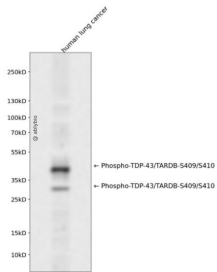
抗原信息	A synthetic phosphorylated peptide around S409 & S410 of human TDP-43/TARDB (NP_031401.1).
序列	SKSSGW

靶点信息

研究背景	HIV-1, the causative agent of acquired immunodeficiency syndrome (AIDS), contains an RNA genome that produces a chromosomally integrated DNA during the replicative cycle. Activation of HIV-1 gene expression by the transactivator Tat is dependent on an RNA regulatory element (TAR) located downstream of the transcription initiation site. The protein encoded by this gene is a transcriptional repressor that binds to chromosomally integrated TAR DNA and represses HIV-1 transcription. In addition, this protein regulates alternate splicing of the CFTR gene. A similar pseudogene is present on chromosome 20.
基因ID	23435

基因名	TARDBP
Swiss	Q13148
别名	ALS10;TDP-43;TARDBP;TDP43

产品验证



Western blot analysis of Phospho-TDP-43/TARDB-S409/S410 expressed in human lung cancer using Phospho-TDP-43/TARDB-S409/S410 Rabbit pAb at 1:1000. Secondary antibody: HRP Goat Anti-Rabbit IgG (H+L) at 1:5000. Lysates/proteins: 30ug per lane. Blocking buffer: 5% non-fat dry milk in TBST. Detection: ECL Enhanced Kit. Exposure time: 120s.

实验步骤

访问官网浏览详情: www.ablybio.cn