

OsLIC1 Rabbit pAb

货号: **AYP22705**

产品信息

反应	Oryza sativa
宿主	Rabbit
克隆性	Polyclonal
预测反应	
应用	WB
推荐浓度	WB: 1:500 - 1:2000
理论分子量	43kDa
实测分子量	50kDa
形式	Liquid
保存条件	Store at -20°C. Avoid freeze / thaw cycles. Buffer: PBS with 0.01% thiomersal,50% glycerol,pH7.3.
偶联物	Unconjugated
阳性对照	leaves (before flower),leaves sheath (before flower)
细胞定位	
纯化	Affinity purification

抗原信息

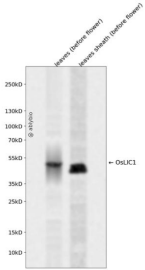
抗原信息	A synthetic peptide of Oryza sativa OsLIC1.
序列	

靶点信息

研究背景	Transcriptional activator that binds double-stranded DNA and the single-stranded RNA polymers poly(rA), poly(rU) and poly(rG), but not poly(rC). Mediates optimal plant architecture through brassinosteroid (BR) signaling. May act as a negative regulator in sterol homeostasis. Acts as negative regulator of BR signaling. Binds to the specific DNA sequence 5'-CTCGC-3' of BZR1 promoter and negatively regulates BZR1. Acts as an antagonistic transcription factor of BZR1 to attenuate the BR signaling pathway and regulate leaf bending. Represses the expression of ILI1, and activates that of IBH1 to balance the regulation activity of BZR1
基因ID	4341994

基因名	
Swiss	Q5Z807
别名	OsLIC1

产品验证



Western blot analysis of OsLIC1 expressed in leaves (before flower),leaves sheath (before flower) using Os LIC1 Rabbit pAb at 1:1000. Secondary antibody: HRP Goat Anti-Rabbit IgG (H+L) at 1:5000. Lysates/proteins: 30ug per lane. Blocking buffer: 5% non-fat dry milk in TBST. Detection: ECL Enhanced Kit. Exposure time: 120s.

实验步骤

访问官网浏览详情: www.ablybio.cn