

# OsTE Rabbit pAb

货号: **AYP22704**

## 产品信息

反应	Oryza sativa
宿主	Rabbit
克隆性	Polyclonal
预测反应	
应用	WB
推荐浓度	<b>WB:</b> 1:500 - 1:2000
理论分子量	56kDa
实测分子量	75kDa
形式	Liquid
保存条件	Store at -20°C. Avoid freeze / thaw cycles. Buffer: PBS with 0.01% thiomersal,50% glycerol,pH7.3.
偶联物	Unconjugated
阳性对照	leaves (before flower),leaves sheath (before flower)
细胞定位	
纯化	Affinity purification

## 抗原信息

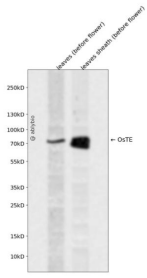
抗原信息	A synthetic peptide of Oryza sativa OsTE.
序列	

## 靶点信息

研究背景	Component of the anaphase promoting complex/cyclosome (APC/C), a cell cycle-regulated E3 ubiquitin-protein ligase complex that controls progression through mitosis and the G1 phase of the cell cycle.
基因ID	4331448
基因名	
Swiss	Q10SH0

别名	TAD1; TE; OsCCS52A
----	--------------------

## 产品验证



Western blot analysis of OsTE expressed in leaves (before flower),leaves sheath (before flower) using OsT E Rabbit pAb at 1:1000. Secondary antibody: HRP Goat Anti-Rabbit IgG (H+L) at 1:5000. Lysates/proteins: 30ug per lane. Blocking buffer: 5% non-fat dry milk in TBST. Detection: ECL Enhanced Kit. Exposure time: 120s.

## 实验步骤

访问官网浏览详情: [www.ablybio.cn](http://www.ablybio.cn)