

# OsELF3 Rabbit pAb

货号: **AYP22703**

## 产品信息

反应	Oryza sativa
宿主	Rabbit
克隆性	Polyclonal
预测反应	
应用	<a href="#">WB</a>
推荐浓度	<b>WB:</b> 1:500 - 1:2000
理论分子量	83kDa
实测分子量	83kDa
形式	Liquid
保存条件	Store at -20°C. Avoid freeze / thaw cycles. Buffer: PBS with 0.02% sodium azide, 50% glycerol, pH7.3.
偶联物	Unconjugated
阳性对照	leaves (before flower)
细胞定位	nucleus
纯化	Affinity purification

## 抗原信息

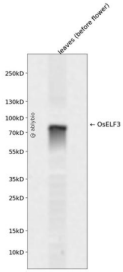
抗原信息	Recombinant protein of Oryza sativa OsELF3.
序列	

## 靶点信息

研究背景	Involved in the regulation of flowering time under short day (SD) and long day (LD) conditions. Functions as floral promoter by negatively regulating GHD7, a repressor of the photoperiodic control of flowering. Acts as floral activator in the LD photoperiodic pathway. Involved in blue light-induced activation of EHD1 expression to promote flowering under SD conditions
基因ID	4340087
基因名	

<b>Swiss</b>	Q9SNQ6
别名	Hd17; Ef7; OsELF3; OsELF3-1; OsELF3.1; Hd-q

## 产品验证



Western blot analysis of OsELF3 expressed in leaves (before flower) using OsELF3 Rabbit pAb at 1:1000. Secondary antibody: HRP Goat Anti-Rabbit IgG (H+L) at 1:5000. Lysates/proteins: 30ug per lane. Blocking buffer: 5% non-fat dry milk in TBST. Detection: ECL Enhanced Kit. Exposure time: 120s.

## 实验步骤

访问官网浏览详情: [www.ablybio.cn](http://www.ablybio.cn)