

# SPATA5 Rabbit pAb

货号: **AYP22696**

## 产品信息

反应	Human,Mouse,Rat
宿主	Rabbit
克隆性	Polyclonal
预测反应	
应用	WB
推荐浓度	<b>WB:</b> 1:100 - 1:500
理论分子量	97kDa
实测分子量	98KDa
形式	Liquid
保存条件	Store at -20°C. Avoid freeze / thaw cycles. Buffer: PBS with 0.05% proclin300,50% glycerol,pH7.3.
偶联物	Unconjugated
阳性对照	293T,Mouse pancreas,Rat kidney
细胞定位	cytoplasm,mitochondrion,spindle
纯化	Affinity purification

## 抗原信息

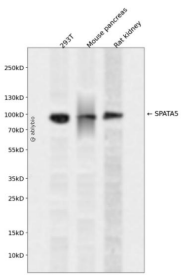
抗原信息	Recombinant fusion protein containing a sequence corresponding to amino acids 228-304 of human SPATA5 (NP_001304728).
序列	LELSLQLSQLDLEDTQIPTSRSTPYKPIDDRITNKASDVLLDVTQSPGDGSGMLLEEVTVGLKCNFESAREGNEQLTE

## 靶点信息

研究背景	This gene encodes a member of the ATPase associated with diverse activities family, whose members are defined by a highly conserved ATPase domain. Members of this family participate in diverse cellular processes that include membrane fusion, DNA replication, microtubule severing, and protein degradation. The protein encoded by this gene has a putative mitochondrial targeting sequence and has been proposed to function in maintenance of mitochondrial function and integrity during mouse spermatogenesis. Allelic variants in this gene have been associated with epilepsy, hearing loss, and cognitive disability syndrome. Alternative splicing results in multiple transcript variants.
------	--

基因ID	166378
基因名	SPATA5
Swiss	Q8NB90
别名	AFG2; SPAF; EHLMRS

## 产品验证



Western blot analysis of SPATA5 expressed in 293T, Mouse pancreas, Rat kidney using SPATA5 Rabbit pAb at 1:1000. Secondary antibody: HRP Goat Anti-Rabbit IgG (H+L) at 1:5000. Lysates/proteins: 30ug per lane. Blocking buffer: 5% non-fat dry milk in TBST. Detection: ECL Enhanced Kit. Exposure time: 120s.

## 实验步骤

访问官网浏览详情: [www.ablybio.cn](http://www.ablybio.cn)