

FPR1 Rabbit pAb

货号: **AYP22695**

产品信息

反应	Human
宿主	Rabbit
克隆性	Polyclonal
预测反应	
应用	WB IHC
推荐浓度	WB: 1:500 - 1:2000 IHC: 1:50 - 1:200
理论分子量	38kDa
实测分子量	38kDa
形式	Liquid
保存条件	Store at -20°C. Avoid freeze / thaw cycles. Buffer: PBS with 0.05% proclin300,50% glycerol,pH7.3.
偶联物	Unconjugated
阳性对照	
细胞定位	cytoplasm,plasma membrane
纯化	Affinity purification

抗原信息

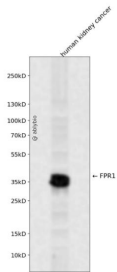
抗原信息	A synthetic peptide corresponding to a sequence within amino acids 250-350 of human FPR1 (NP_002020 .1).
序列	FFLCWSPYQVVALIATVRIRELLQGMKEIGIAVDVTSALAFFNSCLNPMPLYVFMGQDFRERLIHALPASLERALTEDSTQTS DTATNSTLPSAEVELQAK

靶点信息

研究背景	This gene encodes a G protein-coupled receptor of mammalian phagocytic cells that is a member of the G-protein coupled receptor 1 family. The protein mediates the response of phagocytic cells to invasion of the host by microorganisms and is important in host defense and inflammation.
基因ID	2357

基因名	FPR1
Swiss	P21462
别名	FPR; FMLP

产品验证



Western blot analysis of FPR1 expressed in human kidney cancer using FPR1 Rabbit pAb at 1:1000. Secondary antibody: HRP Goat Anti-Rabbit IgG (H+L) at 1:5000. Lysates/proteins: 30ug per lane. Blocking buffer: 5% non-fat dry milk in TBST. Detection: ECL Enhanced Kit. Exposure time: 120s.

实验步骤

访问官网浏览详情: www.ablybio.cn