

CASP1 Rabbit pAb

货号: **AYP22692**

产品信息

反应	Mouse,Rat
宿主	Rabbit
克隆性	Polyclonal
预测反应	
应用	WB IF/ICC
推荐浓度	WB: 1:500 - 1:1000 IF/ICC: 1:50 - 1:200
理论分子量	45kDa
实测分子量	48KDa
形式	Liquid
保存条件	Store at -20°C. Avoid freeze / thaw cycles. Buffer: PBS with 0.05% proclin300,50% glycerol,pH7.3.
偶联物	Unconjugated
阳性对照	Mouse testis
细胞定位	AIM2 inflammasome complex,cytoplasm,cytosol,extracellular region,extracellular space,inflammasome complex,IPAF inflammasome complex,mitochondrion,neuron projection,NLRP1 inflammasome complex,NLRP3 inflammasome complex,nucleus,plasma membrane
纯化	Affinity purification

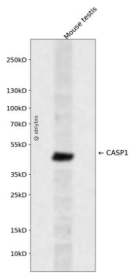
抗原信息

抗原信息	A synthetic peptide corresponding to a sequence within amino acids 200-300 of mouse CASP1 (NP_033937.2).
序列	KVKENLTALEMVKEVKEFAACPEHKTSdstflvfmshgIQEGICgTtYSNEVSDILKVDtIFqMMnTLKcPSLkDKPKVllIQACRGEKQGvVLLKDSVRD

靶点信息

研究背景	Thiol protease involved in a variety of inflammatory processes by proteolytically cleaving other proteins, such as the precursors of the inflammatory cytokines interleukin-1 beta (IL1B and interleukin 18 (IL18 as well as the pyroptosis inducer Gasdermin-D (GSDMD, into active mature peptides. Plays a key role in cell immunity as an inflammatory response initiator: once activated through formation of an inflammasome complex, it initiates a proinflammatory response through the cleavage of the two inflammatory cytokines IL1B and IL18, releasing the mature cytokines which are involved in a variety of inflammatory processes. Cleaves a tetrapeptide after an Asp residue at position P1. Also initiates pyroptosis, a programmed lytic cell death pathway, through cleavage of GSDMD. In contrast to cleavage of interleukins IL1B and IL18, recognition and cleavage of GSDMD is not strictly dependent on the consensus cleavage site but depends on an exosite interface on CASP1 that recognizes and binds the Gasdermin-D, C-terminal (GSDMD-CT part. Upon inflammasome activation, during DNA virus infection but not RNA virus challenge, controls antiviral immunity through the cleavage of CGAS, rendering it inactive. In apoptotic cells, cleaves SPHK2 which is released from cells and remains enzymatically active extracellularly (By similarity).
基因ID	12362
基因名	
Swiss	P29452
别名	IC; ICE; I11; Casp; I11bc

产品验证



Western blot analysis of CASP1 expressed in Mouse testis using CASP1 Rabbit pAb at 1:1000. Secondary antibody: HRP Goat Anti-Rabbit IgG (H+L) at 1:5000. Lysates/proteins: 30ug per lane. Blocking buffer: 5% non-fat dry milk in TBST. Detection: ECL Enhanced Kit. Exposure time: 120s.

实验步骤

访问官网浏览详情: www.ablybio.cn