

METTL8 Rabbit pAb

货号: AYP22689

产品信息

反应	Human,Mouse,Rat
宿主	Rabbit
克隆性	Polyclonal
预测反应	
应用	WB
推荐浓度	WB: 1:500 - 1:1000
理论分子量	33kDa
实测分子量	33KDa
形式	Liquid
保存条件	Store at -20°C. Avoid freeze / thaw cycles. Buffer: PBS with 0.01% thiomersal,50% glycerol,pH7.3.
偶联物	Unconjugated
阳性对照	Rat testis,Rat kidney
细胞定位	mitochondrion
纯化	Affinity purification

抗原信息

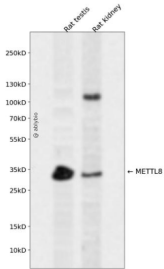
抗原信息	Recombinant fusion protein containing a sequence corresponding to amino acids 1-140 of human METTL8 (NP_001308089.1).
序列	MNMIWRNSISCLRLGKVPHPYQSGYHPVAPLGSRLTDPKVF EHNMWDMQWSKEEEAARKVKENS AVRVLLEEQV KYEREASKYWDTFYKIHKNKFFKDRNWLLREFPEILPVDQKPEEKARESSWDHVKTSATNR

靶点信息

研究背景	S-adenosyl-L-methionine-dependent methyltransferase that mediates N(3-methylcytidine modification of mRNAs.
基因ID	79828
基因名	METTL8

Swiss	Q9H825
别名	TIP

产品验证



Western blot analysis of METTL8 expressed in Rat testis,Rat kidney using METTL8 Rabbit pAb at 1:1000. Secondary antibody: HRP Goat Anti-Rabbit IgG (H+L) at 1:5000. Lysates/proteins: 30ug per lane. Blocking buffer: 5% non-fat dry milk in TBST. Detection: ECL Enhanced Kit. Exposure time: 120s.

实验步骤

访问官网浏览详情: www.ablybio.cn