

Syntrophin alpha 1 Rabbit pAb

货号: AYP22686

产品信息

反应	Human,Mouse,Rat
宿主	Rabbit
克隆性	Polyclonal
预测反应	
应用	WB IF/ICC
推荐浓度	WB: 1:100 - 1:500 IF/ICC: 1:50 - 1:200
理论分子量	54kDa
实测分子量	59KDa
形式	Liquid
保存条件	Store at -20°C. Avoid freeze / thaw cycles. Buffer: PBS with 0.05% proclin300,50% glycerol,pH7.3.
偶联物	Unconjugated
阳性对照	HeLa,RD,Mouse skeletal muscle,Mouse brain,Mouse heart,Rat skeletal muscle,Rat kidney,Rat heart
细胞定位	cytoplasm,cytoskeleton,neuromuscular junction,postsynaptic membrane,synapse
纯化	Affinity purification

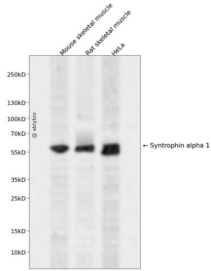
抗原信息

抗原信息	Recombinant fusion protein containing a sequence corresponding to amino acids 1-90 of human Syntrophin alpha 1 (NP_003089.1).
序列	MASGRRAPRTGELLELRAGAGSGAGGERWQRVLLSLAEDVLTVSPADGDPGPEPGAPREQEPAQLNGAAEPGAGPPQLPEALLQRRRVTV

靶点信息

研究背景	Syntrophins are cytoplasmic peripheral membrane scaffold proteins that are components of the dystrophin-associated protein complex. This gene is a member of the syntrophin gene family and encodes the most common syntrophin isoform found in cardiac tissues. The N-terminal PDZ domain of this syntrophin protein interacts with the C-terminus of the pore-forming alpha subunit (SCN5A) of the cardiac sodium channel Nav1.5. This protein also associates cardiac sodium channels with the nitric oxide synthase-PMCA4b (plasma membrane Ca-ATPase subtype 4b) complex in cardiomyocytes. This gene is a susceptibility locus for Long-QT syndrome (LQT) - an inherited disorder associated with sudden cardiac death from arrhythmia - and sudden infant death syndrome (SIDS). This protein also associates with dystrophin and dystrophin-related proteins at the neuromuscular junction and alters intracellular calcium ion levels in muscle tissue. [provided by RefSeq, Jan 2013]
基因ID	6640
基因名	SNTA1
Swiss	Q13424
别名	LQT12; SNT1; TACIP1; dJ1187J4.5

产品验证



Western blot analysis of Syntrophin alpha 1 expressed in Mouse skeletal muscle, Rat skeletal muscle, HeLa using Syntrophin alpha 1 Rabbit pAb at 1:1000. Secondary antibody: HRP Goat Anti-Rabbit IgG (H+L) at 1:5000. Lysates/proteins: 30ug per lane. Blocking buffer: 5% non-fat dry milk in TBST. Detection: ECL Enhanced Kit. Exposure time: 120s.

实验步骤

访问官网浏览详情: www.ablybio.cn