

# SSR2 Rabbit pAb

货号: **AYP22684**

## 产品信息

反应	Human,Mouse,Rat
宿主	Rabbit
克隆性	Polyclonal
预测反应	
应用	WB IHC IF/ICC
推荐浓度	<b>WB:</b> 1:500 - 1:1000 <b>IHC:</b> 1:50 - 1:200 <b>IF/ICC:</b> 1:50 - 1:200
理论分子量	20kDa
实测分子量	22KDa
形式	Liquid
保存条件	Store at -20°C. Avoid freeze / thaw cycles. Buffer: PBS with 0.01% thiomersal,50% glycerol,pH7.3.
偶联物	Unconjugated
阳性对照	HepG2,A-549,SKOV3,Mouse liver,Mouse pancreas,Rat liver,Rat pancreas
细胞定位	endoplasmic reticulum
纯化	Affinity purification

## 抗原信息

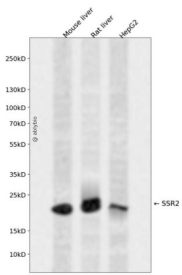
抗原信息	Recombinant fusion protein containing a sequence corresponding to amino acids 18-145 of human SSR2 ( NP_003136.1).
序列	EEGARLLASKSLLNRYAVEGRDLTLQYNIYNVGSSAALDVELSDDSFPPEDFGIVSGMLNVKWDRIAPASNVSHTVVLRLPLKAGYFNFTSATITYLAQEDGPPVIGSTSAPGQGILAQREFDRRFSP

## 靶点信息

研究背景	The signal sequence receptor (SSR) is a glycosylated endoplasmic reticulum (ER) membrane receptor associated with protein translocation across the ER membrane. The SSR consists of 2 subunits, a 34-kD glyco protein (alpha-SSR or SSR1) and a 22-kD glycoprotein (beta-SSR or SSR2). The human beta-signal sequence receptor gene (SSR2) maps to chromosome bands 1q21-q23.
------	---

基因ID	6746
基因名	SSR2
Swiss	P43308
别名	TLAP; HSD25; TRAPB; TRAP-BETA

## 产品验证



Western blot analysis of SSR2 expressed in Mouse liver, Rat liver, HepG2 using SSR2 Rabbit pAb at 1:1000. Secondary antibody: HRP Goat Anti-Rabbit IgG (H+L) at 1:5000. Lysates/proteins: 30ug per lane. Blocking buffer: 5% non-fat dry milk in TBST. Detection: ECL Enhanced Kit. Exposure time: 120s.

## 实验步骤

访问官网浏览详情: [www.ablybio.cn](http://www.ablybio.cn)