

RBL1 Rabbit pAb

货号: **AYP22680**

产品信息

反应	Human
宿主	Rabbit
克隆性	Polyclonal
预测反应	
应用	WB
推荐浓度	WB: 1:500 - 1:1000
理论分子量	120kDa
实测分子量	115kDa
形式	Liquid
保存条件	Store at -20°C. Avoid freeze / thaw cycles. Buffer: PBS with 0.01% thiomersal, 50% glycerol, pH7.3.
偶联物	Unconjugated
阳性对照	MCF7, HT-29
细胞定位	nucleoplasm
纯化	Affinity purification

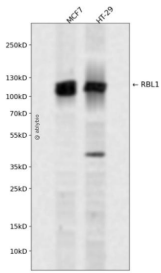
抗原信息

抗原信息	A synthetic peptide corresponding to a sequence within amino acids 100-200 of human RBL1 (NP_002886 .2).
序列	QFFSKMKKWMDMSNLPQEFRERIERLERNFEVSTVIFKKYEPIFLDIFQNPYEPPKLRSRKQRRIPCSVKDLFNFCWTLFV YTKGNFRMIGDDLNSYH

靶点信息

研究背景	The protein encoded by this gene is similar in sequence and possibly function to the product of the retino blastoma 1 (RB1) gene. The RB1 gene product is a tumor suppressor protein that appears to be involved in cell cycle regulation, as it is phosphorylated in the S to M phase transition and is dephosphorylated in the G1 phase of the cell cycle. Both the RB1 protein and the product of this gene can form a complex with adenovirus E1A protein and SV40 large T-antigen, with the SV40 large T-antigen binding only to the unphosphorylated form of each protein. In addition, both proteins can inhibit the transcription of cell cycle genes containing E2F binding sites in their promoters. Due to the sequence and biochemical similarities with the RB1 protein, it is thought that the protein encoded by this gene may also be a tumor suppressor. Two transcript variants encoding different isoforms have been found for this gene.
基因ID	5933
基因名	RBL1
Swiss	P28749
别名	PRB1; p107; CP107

产品验证



Western blot analysis of RBL1 expressed in MCF7,HT-29 using RBL1 Rabbit pAb at 1:1000. Secondary antibody: HRP Goat Anti-Rabbit IgG (H+L) at 1:5000. Lysates/proteins: 30ug per lane. Blocking buffer: 5% non-fat dry milk in TBST. Detection: ECL Enhanced Kit. Exposure time: 120s.

实验步骤

访问官网浏览详情: www.ablybio.cn