

# WDR46 Rabbit pAb

货号: **AYP22677**

## 产品信息

反应	Human,Mouse,Rat
宿主	Rabbit
克隆性	Polyclonal
预测反应	
应用	WB IHC IF/ICC
推荐浓度	<b>WB:</b> 1:500 - 1:2000 <b>IHC:</b> 1:50 - 1:200 <b>IF/ICC:</b> 1:50 - 1:200
理论分子量	68kDa
实测分子量	68kDa
形式	Liquid
保存条件	Store at -20°C. Avoid freeze / thaw cycles. Buffer: PBS with 0.05% proclin300,50% glycerol,pH7.3.
偶联物	Unconjugated
阳性对照	HeLa cells, Jurkat cells, mouse spleen tissue, rat spleen tissue
细胞定位	nucleolus,nucleoplasm
纯化	Affinity purification

## 抗原信息

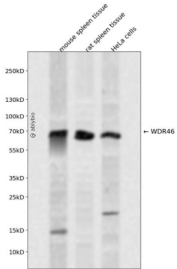
抗原信息	Recombinant fusion protein containing a sequence corresponding to amino acids 421-610 of human WDR 46 (NP_005443.3).
序列	DVVNIWAGQGKASPPSLEQPYLTHRLSGPVHGLQFCPFEDVLGVGHTGGITSMLVPGAGEPNFDGLESNPYRSRKQRQE WEVKALLEKVPaelicldpralaeVDVISLEQgkKEQIERLGYDPQAKAPFQPKPKQGRSSTASLVKRKRKVMDEEHRDK VRQSLQQHHKEAKAKPTGARPSALDRFVR

## 靶点信息

研究背景	Scaffold component of the nucleolar structure. Required for localization of DDX21 and NCL to the granular compartment of the nucleolus.
基因ID	9277

基因名	WDR46
Swiss	O15213
别名	UTP7; BING4; FP221; C6orf11

## 产品验证



Western blot analysis of WDR46 expressed in mouse spleen tissue, rat spleen tissue, HeLa cells using WDR46 Rabbit pAb at 1:1000. Secondary antibody: HRP Goat Anti-Rabbit IgG (H+L) at 1:5000. Lysates/proteins: 30ug per lane. Blocking buffer: 5% non-fat dry milk in TBST. Detection: ECL Enhanced Kit. Exposure time: 120s.

## 实验步骤

访问官网浏览详情: [www.ablybio.cn](http://www.ablybio.cn)