

INSM1 Rabbit pAb

货号: **AYP22667**

产品信息

反应	Human,Mouse
宿主	Rabbit
克隆性	Polyclonal
预测反应	
应用	WB IHC
推荐浓度	WB: 1:500 - 1:1000 IHC: 1:50 - 1:200
理论分子量	52kDa
实测分子量	53kDa
形式	Liquid
保存条件	Store at -20°C. Avoid freeze / thaw cycles. Buffer: PBS with 0.05% proclin300,50% glycerol,pH7.3.
偶联物	Unconjugated
阳性对照	SH-SY5Y,Mouse pancreas
细胞定位	nucleoplasm,nucleus
纯化	Affinity purification

抗原信息

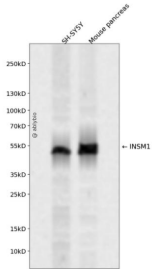
抗原信息	Recombinant fusion protein containing a sequence corresponding to amino acids 360-469 of human INSM 1 (NP_002187.1).
序列	SGSEdGLYECHHCAKKFRRQAYLRKHLLAHHQALQAKGAPLAPPAEDLLALYPGPDEKAPQEAAGDGEGAGVLGLSASA ECHLCPVCGESFASKGAQERHLRLLHAAQVF

靶点信息

研究背景	Insulinoma-associated 1 (INSM1) gene is intronless and encodes a protein containing both a zinc finger DNA-binding domain and a putative prohormone domain. This gene is a sensitive marker for neuroendocrine differentiation of human lung tumors.
基因ID	3642

基因名	INSM1
Swiss	Q01101
别名	IA1; IA-1

产品验证



Western blot analysis of INSM1 expressed in SH-SY5Y, Mouse pancreas using INSM1 Rabbit pAb at 1:1000. Secondary antibody: HRP Goat Anti-Rabbit IgG (H+L) at 1:5000. Lysates/proteins: 30ug per lane. Blocking buffer: 5% non-fat dry milk in TBST. Detection: ECL Enhanced Kit. Exposure time: 120s.

实验步骤

访问官网浏览详情: www.ablybio.cn